

# Urban Forest Management Plan

## Volume 2. Map Folio

Timberline Forest Inventory Consultants  
Edmonton, Alberta

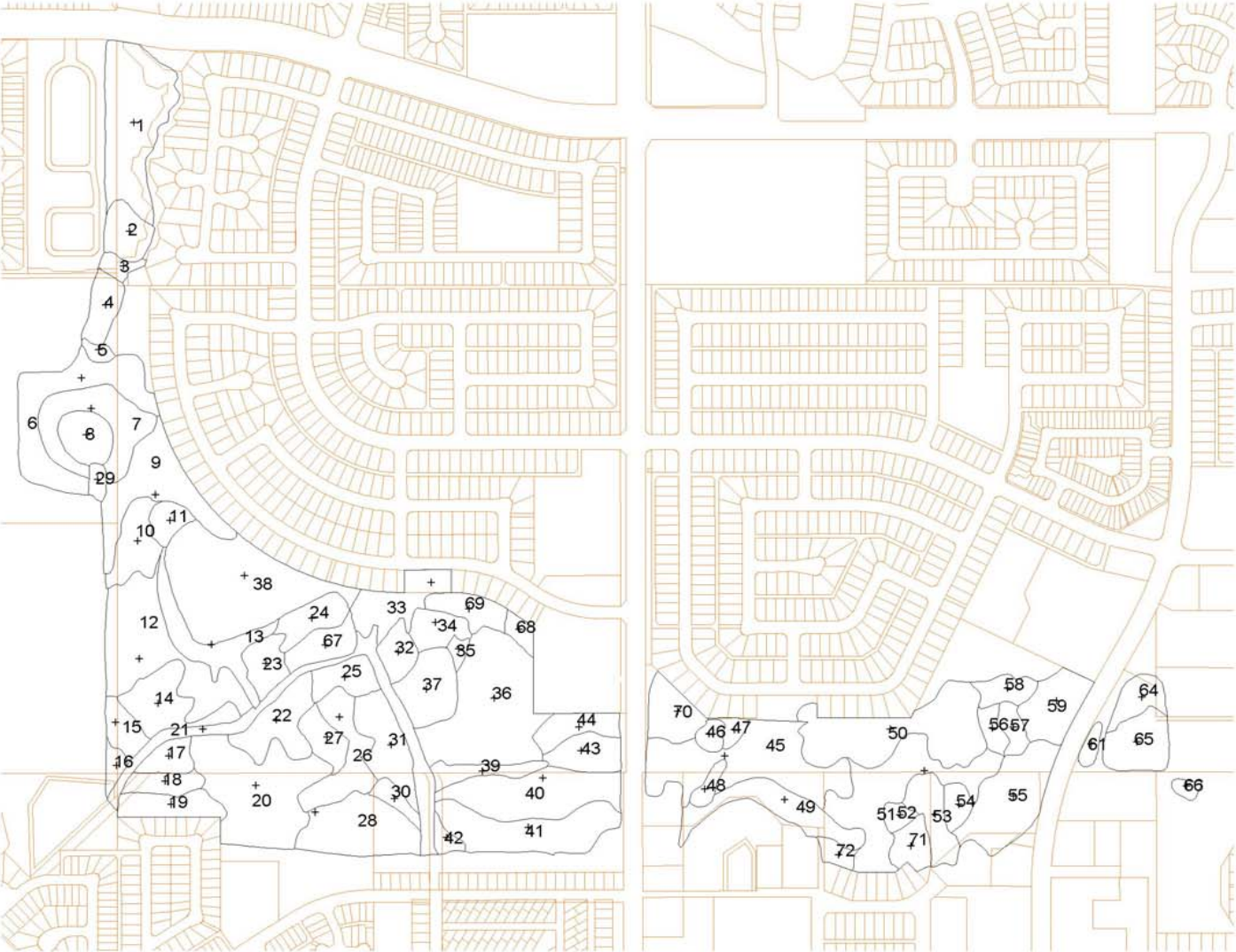
December 2004

This volume accompanies Volume 1 of the City of Spruce Grove Urban Forest Management Plan. There are four sections in Volume 2 corresponding to each of the four forests that are considered in the management plan. Background information on how the theme values were determined and how they relate to forest management is given in Volume 1.

# Heritage Grove Maps



# Figure HG-1. Heritage Grove Map Unit Numbers

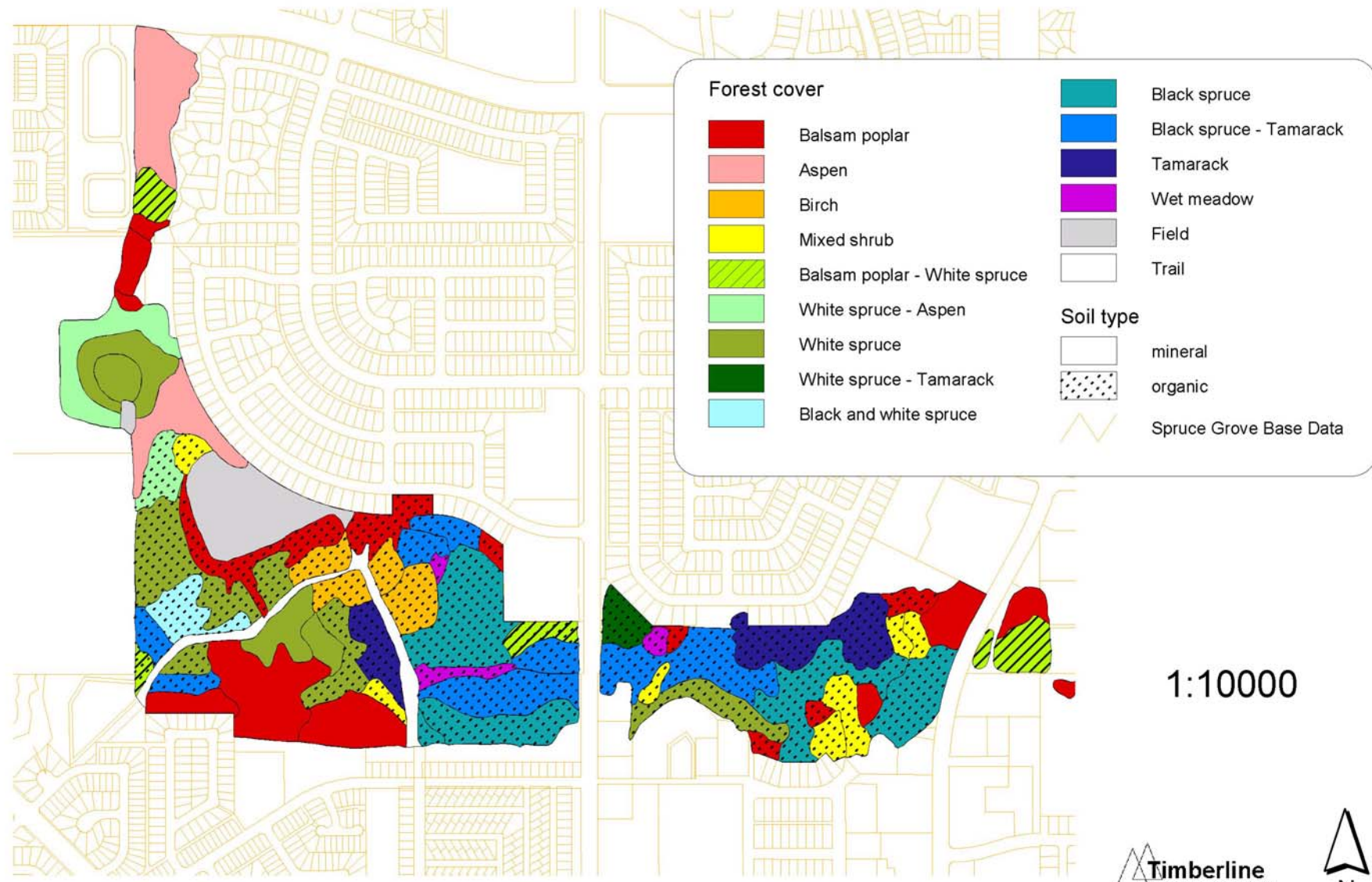


1:10000





# Figure HG-2. Heritage Grove Forest Cover and Soil Type



**Forest cover**

- Balsam poplar
- Aspen
- Birch
- Mixed shrub
- Balsam poplar - White spruce
- White spruce - Aspen
- White spruce
- White spruce - Tamarack
- Black and white spruce

**Soil type**

- Black spruce
- Black spruce - Tamarack
- Tamarack
- Wet meadow
- Field
- Trail
- mineral
- organic
- Spruce Grove Base Data

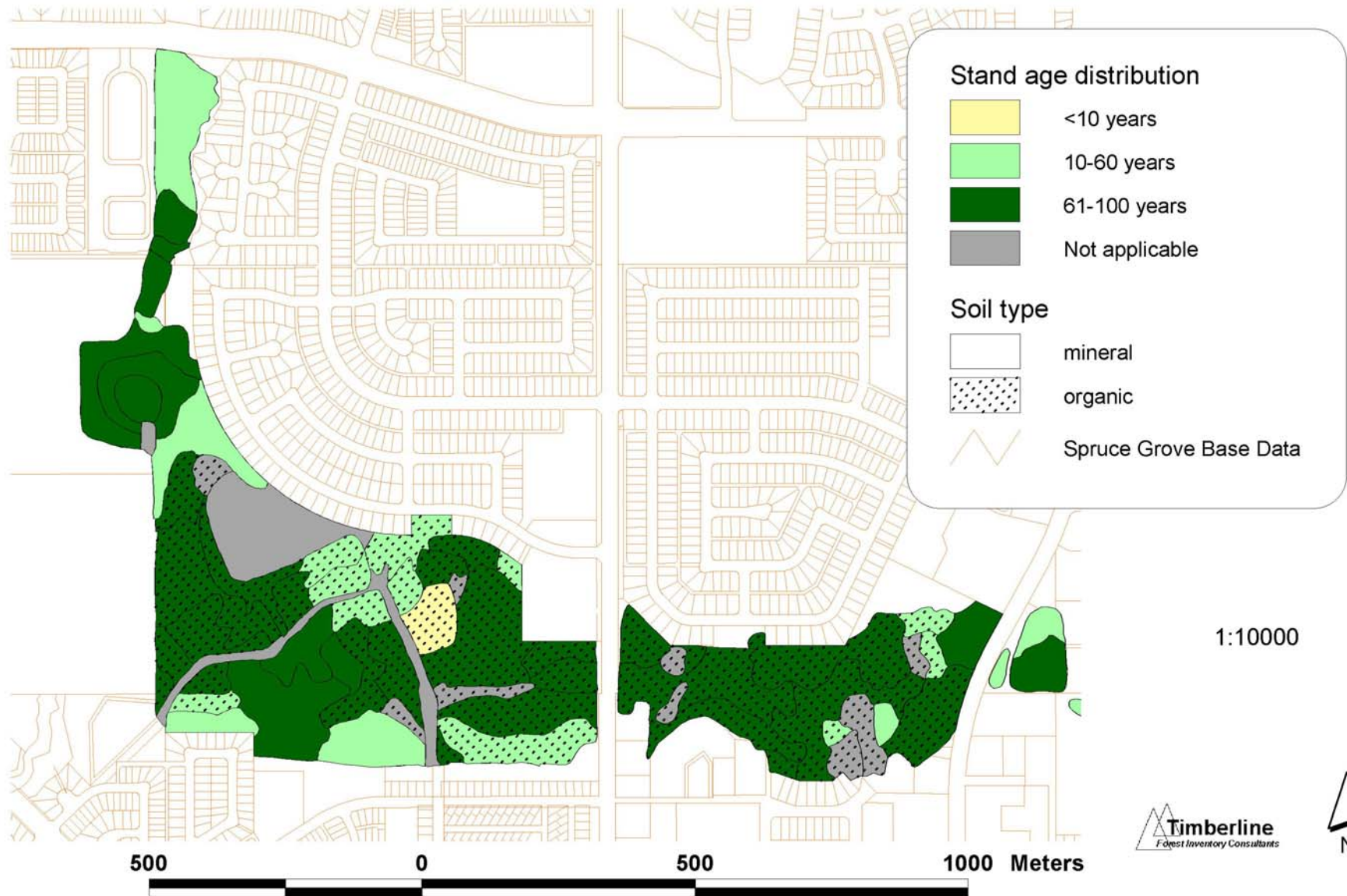
1:10000

500                      0                      500                      1000 Meters

**Timberline**  
Forest Inventory Consultants

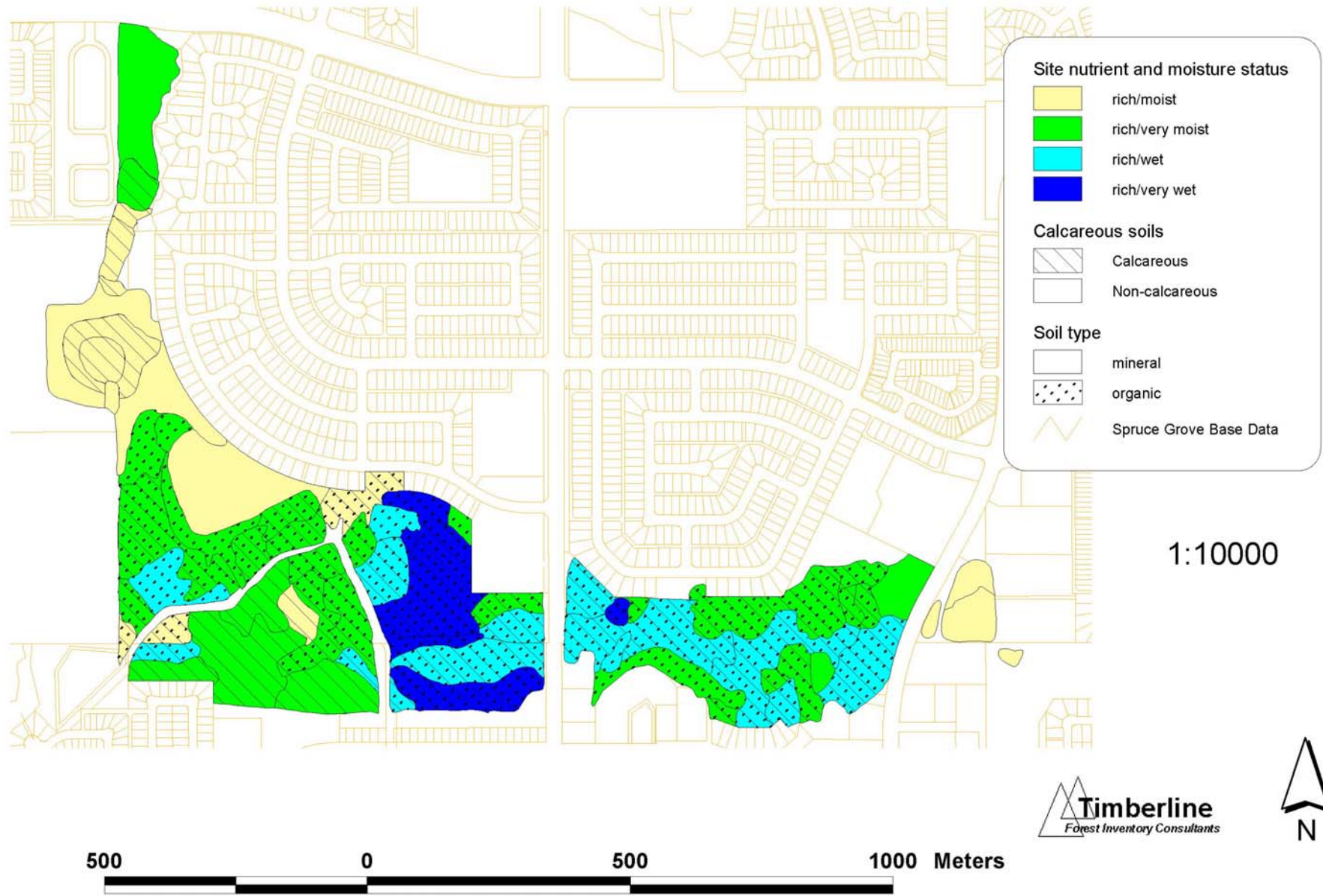


# Figure HG-3. Heritage Grove Stand Age Class Distribution



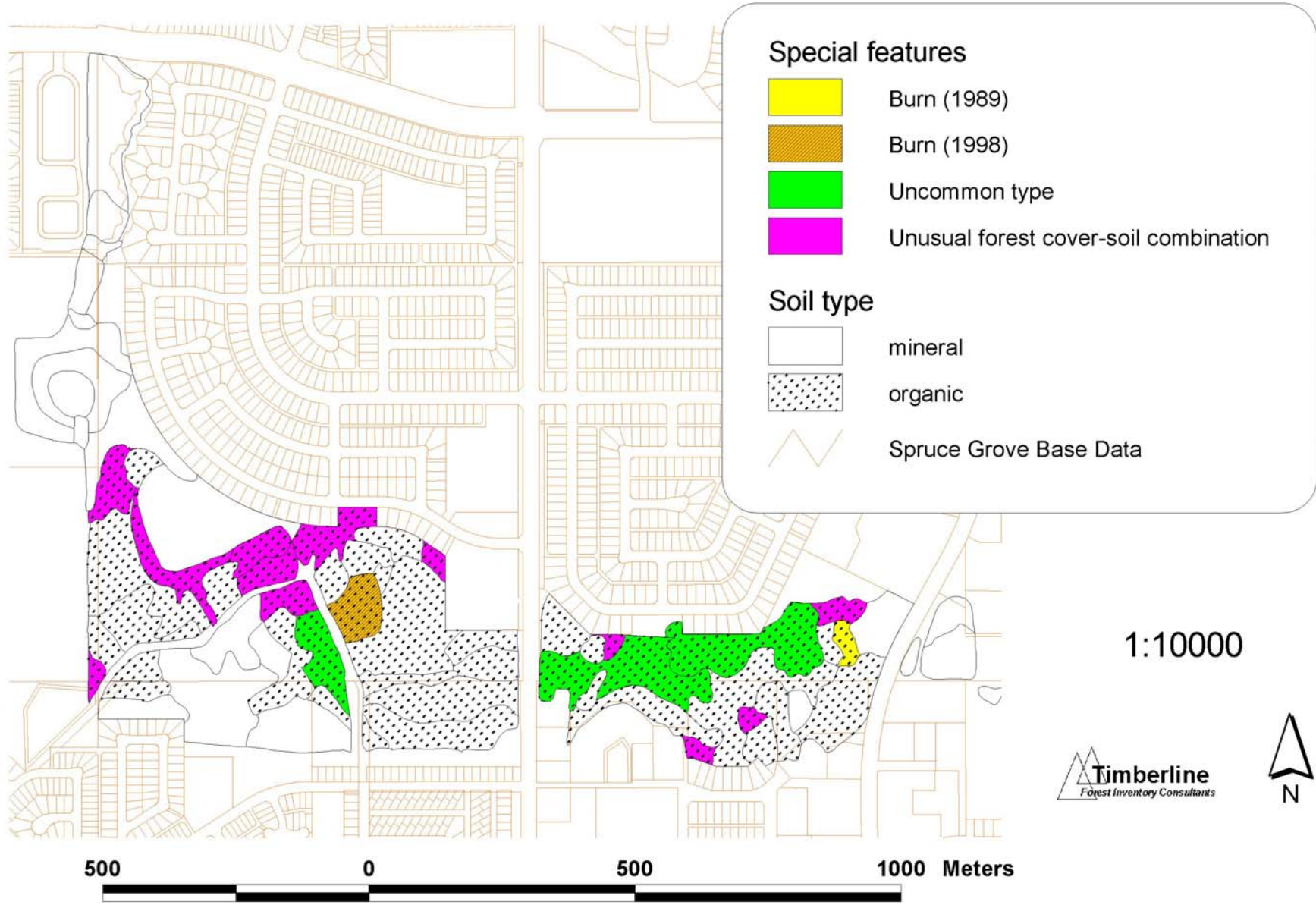


# Figure HG-4. Heritage Grove Site Nutrient and Moisture Status

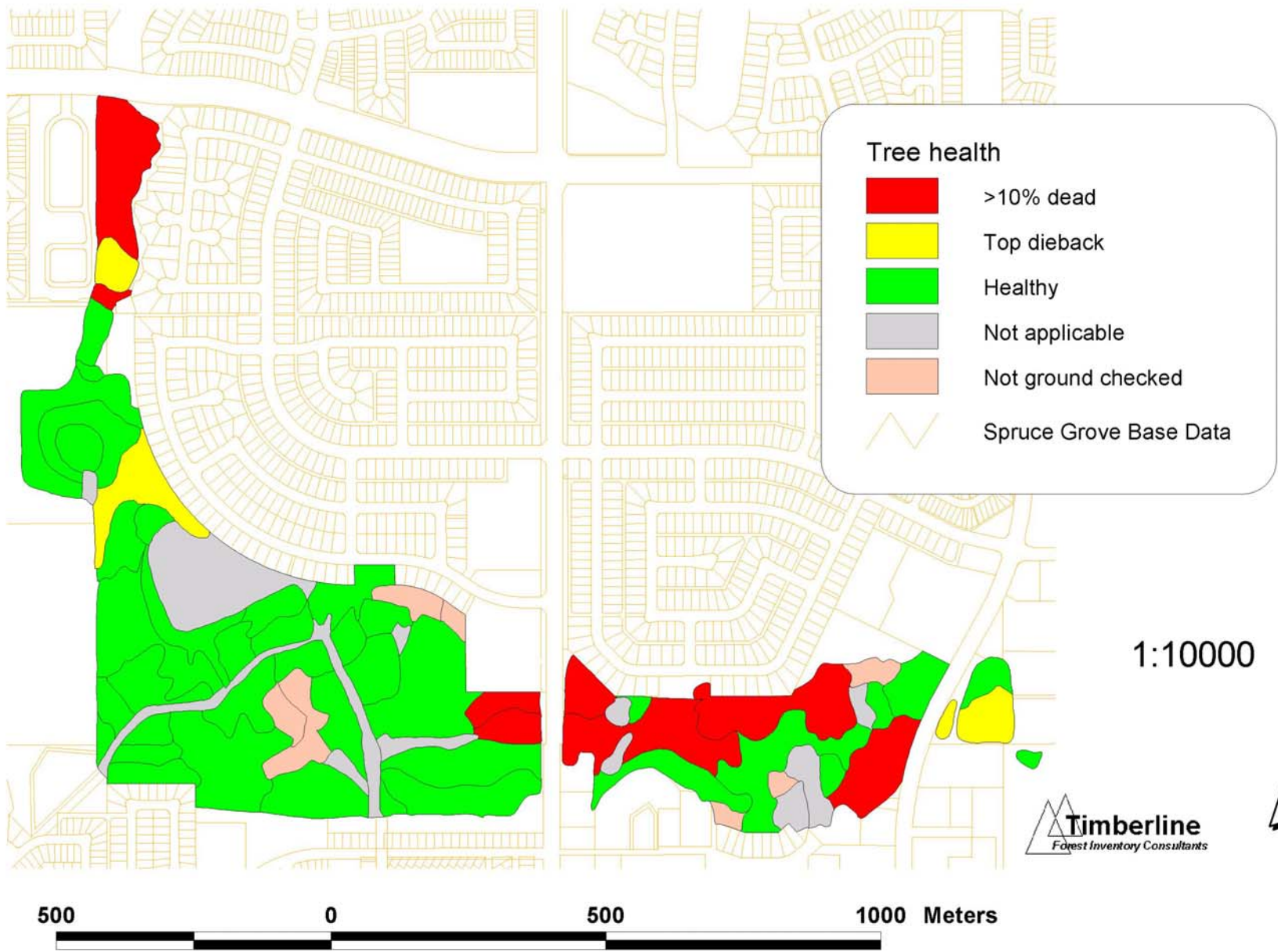




# Figure HG-5. Heritage Grove Special Features

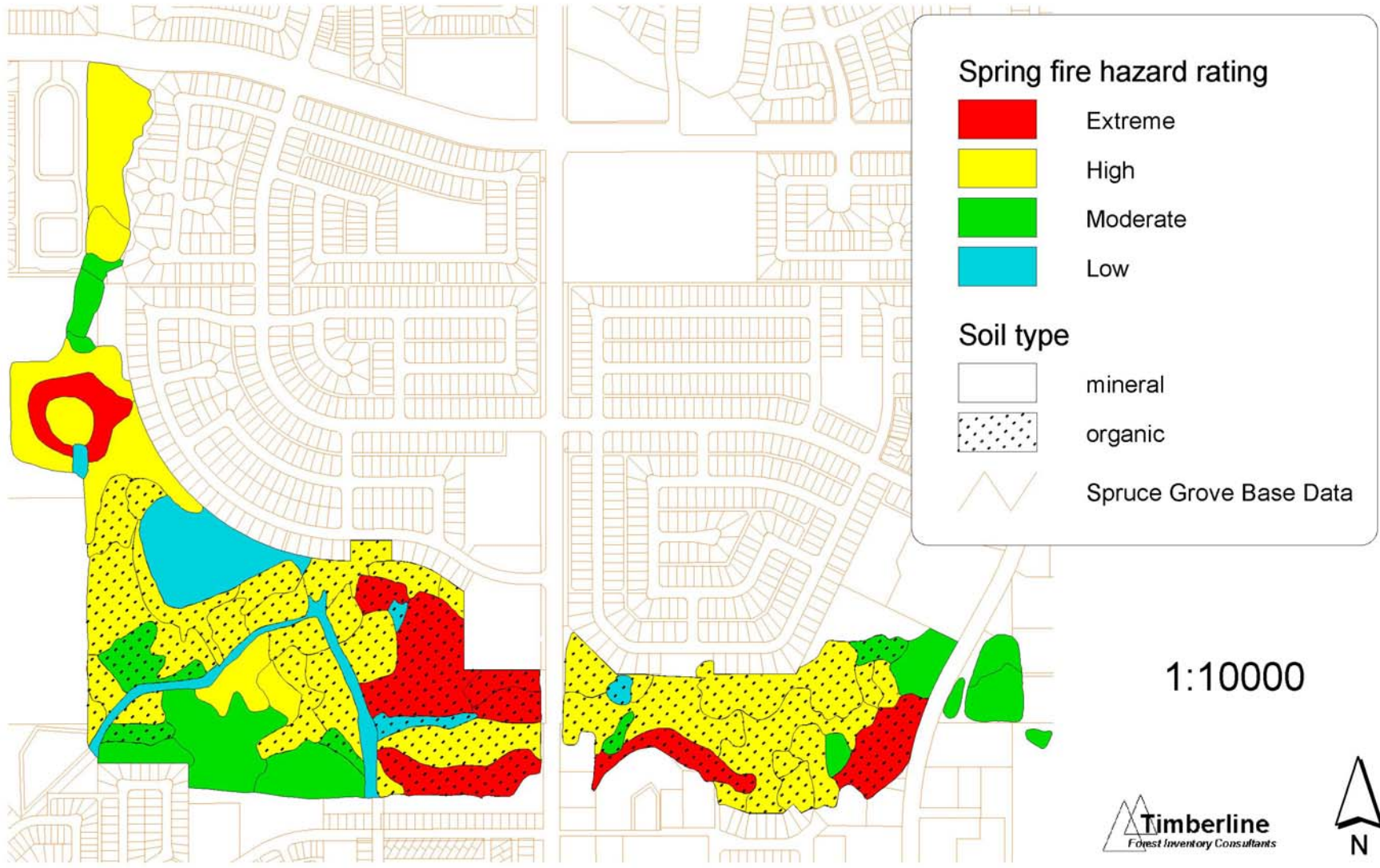


# Figure HG-6. Heritage Grove Tree Health Assessment 2004





# Figure HG-7. Heritage Grove Spring Fire Hazard Potential



500 0 500 1000 Meters

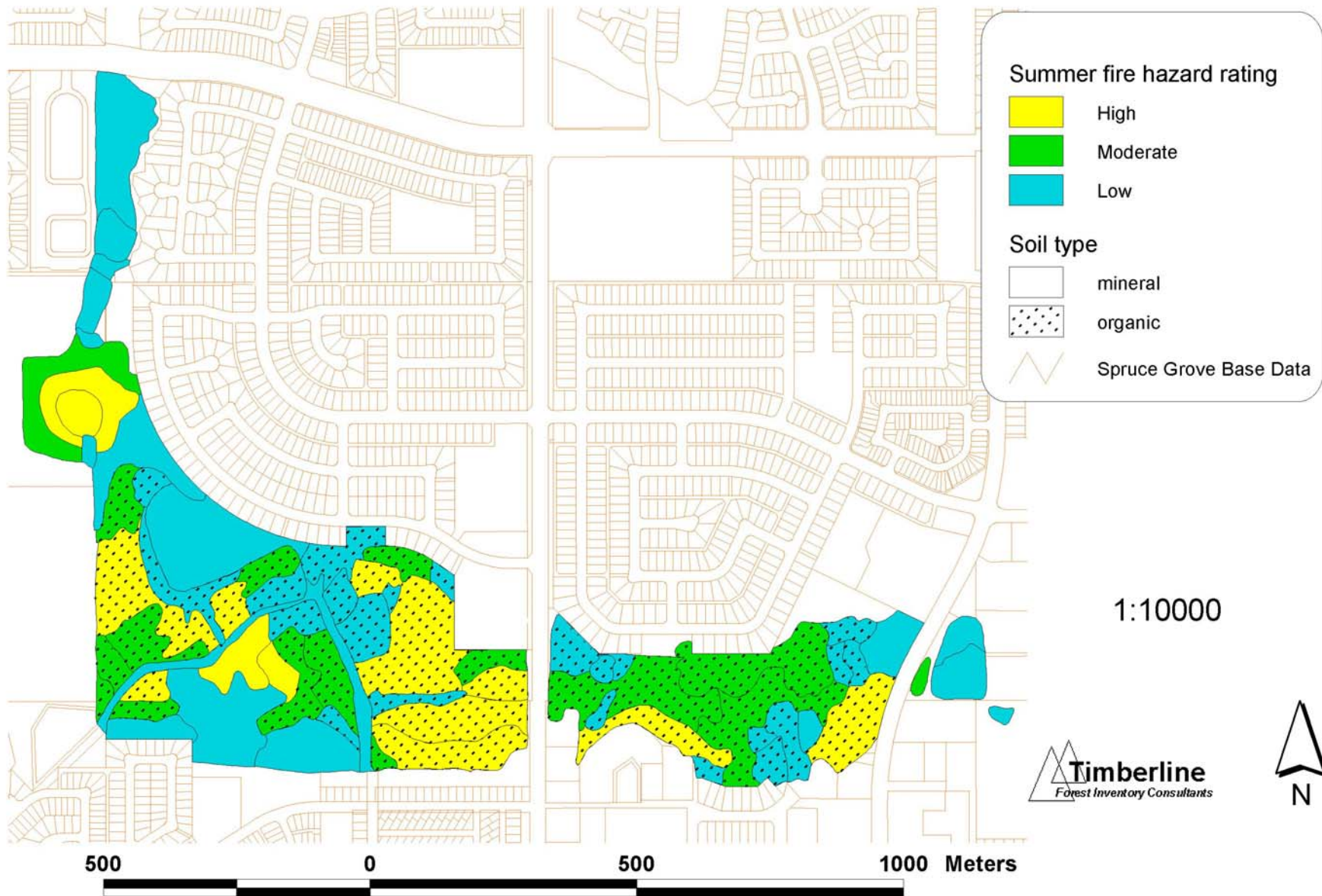
1:10000

**Timberline**  
Forest Inventory Consultants





# Figure HG-8. Heritage Grove Summer Fire Hazard Potential



# Figure HG-9. Heritage Grove Decay and Breakage Hazard





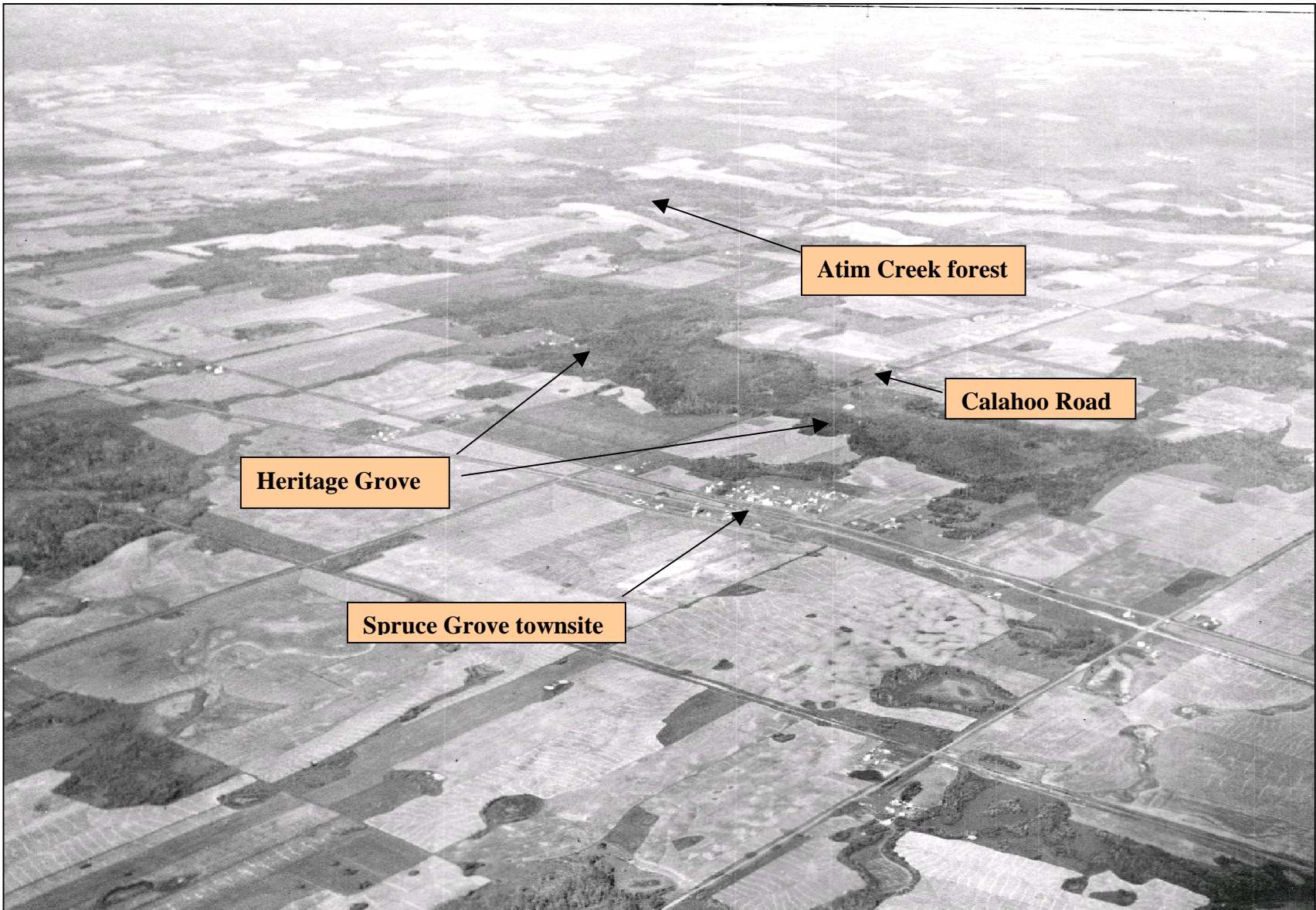
# Figure HG-10. Heritage Grove Blowdown Hazard





# Figure HG-11. Heritage Grove Wildlife Snag Habitat Potential

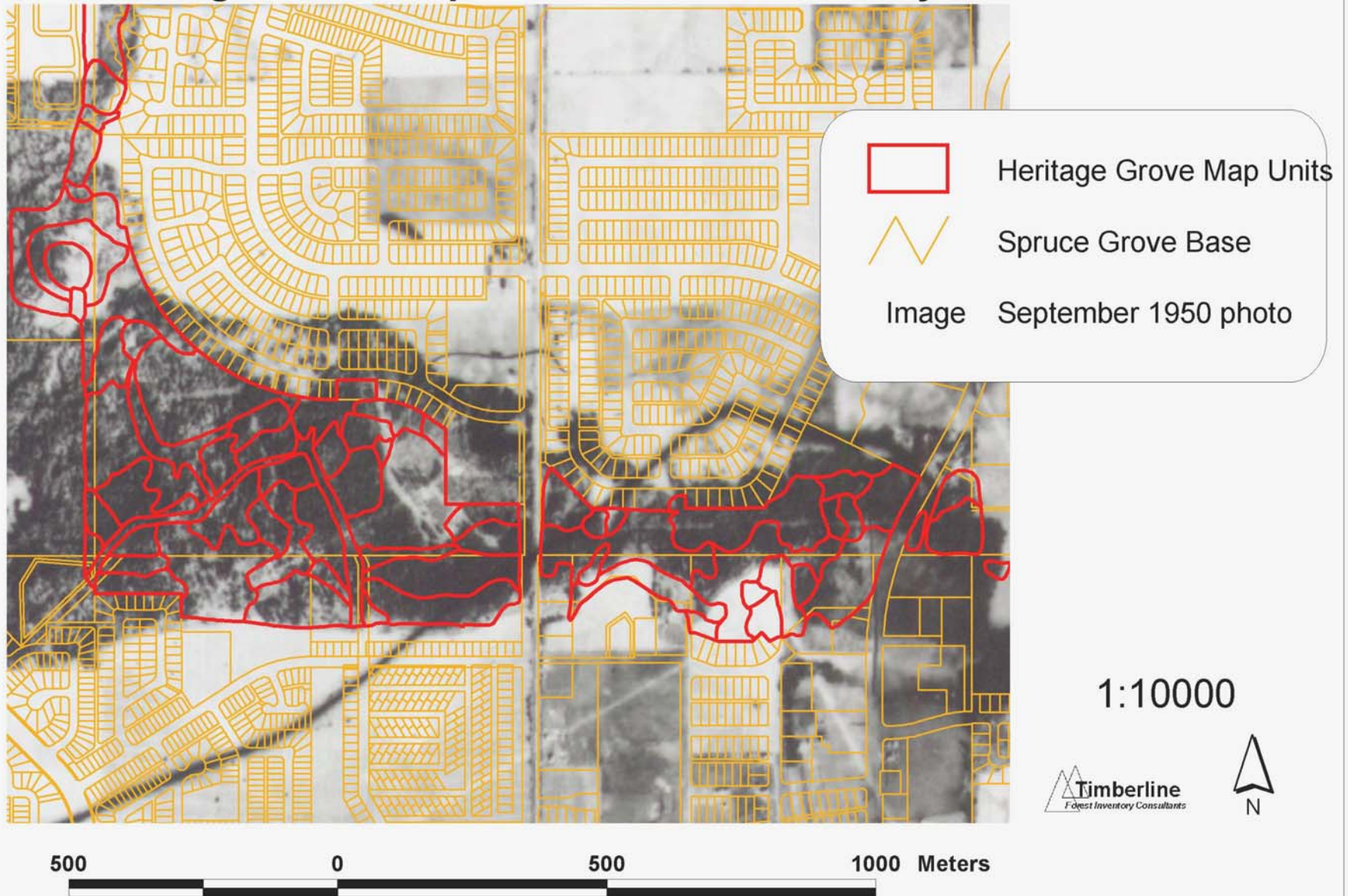




**Figure HG-12. Heritage Grove and Atim Creek, 1920's**

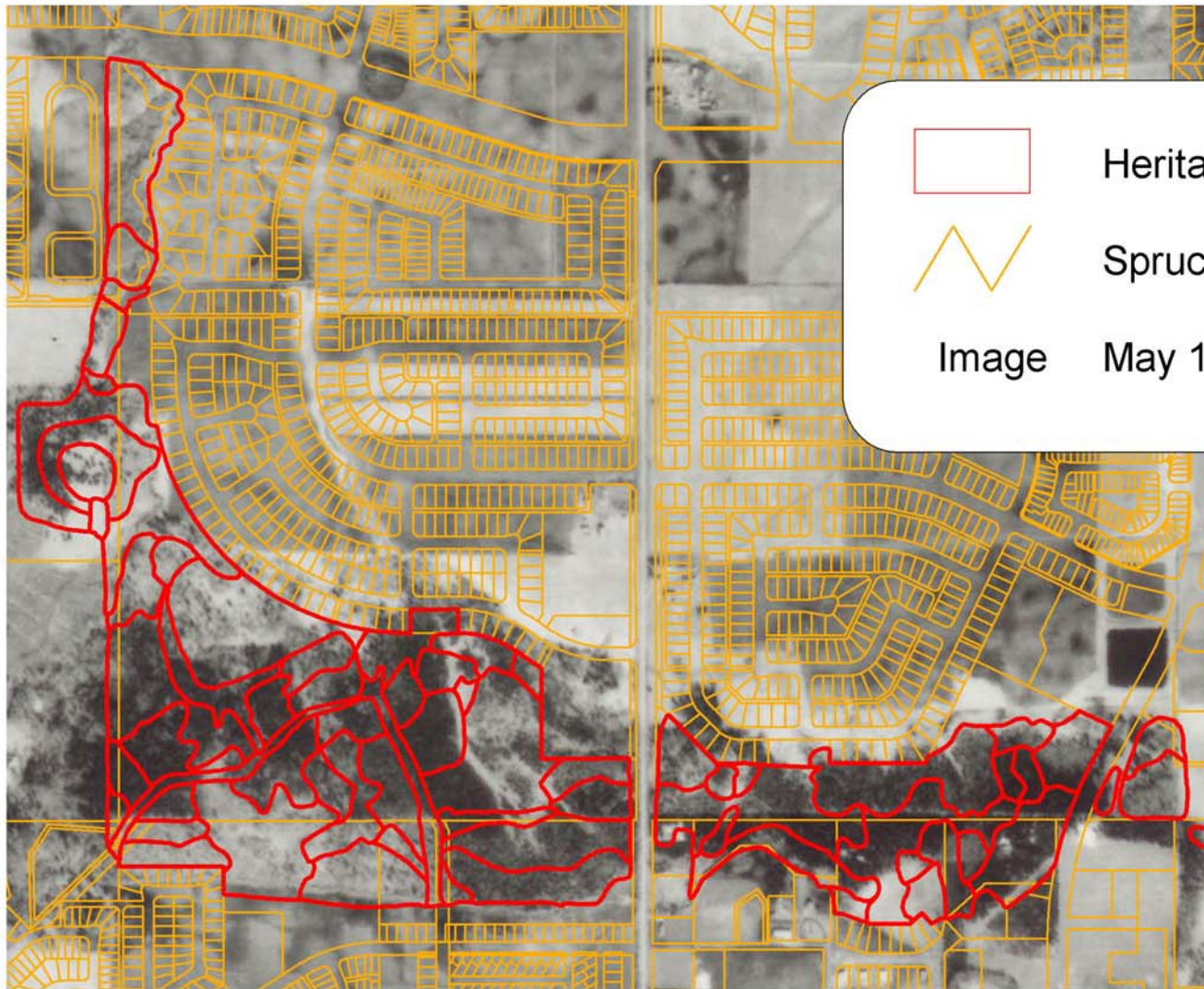


**Figure HG-13. Heritage Grove (September 1950)  
showing current map unit boundaries and city base**





**Figure HG-14. Heritage Grove (May 1962)  
showing current map unit boundaries and city base**



Legend:

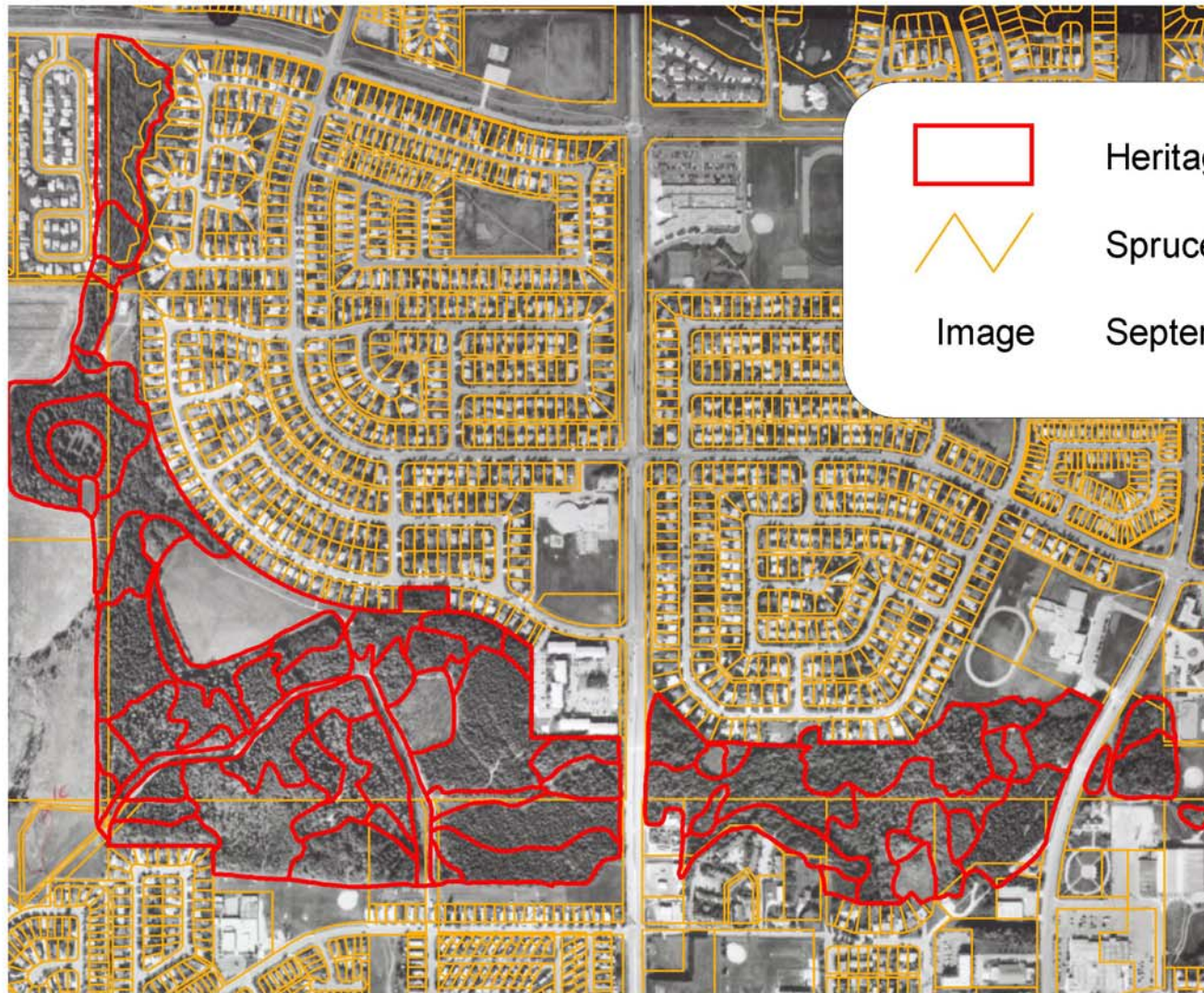
-  Heritage Grove Map Units
-  Spruce Grove Base
- Image May 1962 photo

1:10000





**Figure HG-15. Heritage Grove (September 1999)  
showing current map unit boundaries and city base**



Legend:

-  Heritage Grove Map Units
-  Spruce Grove Base
- Image September 1999 photo

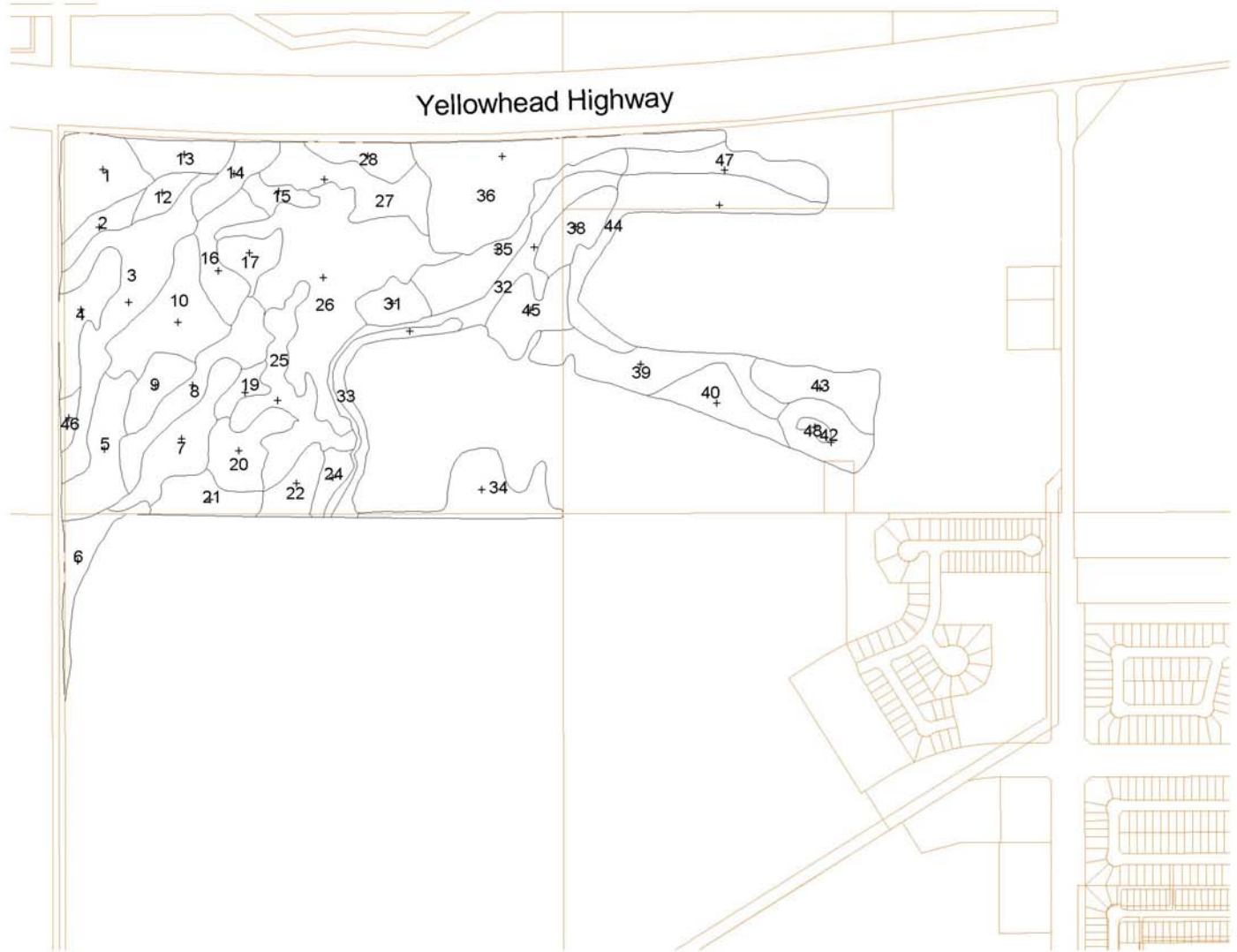
1:10000





# **Atim Creek Forest Maps**

# Figure AC-1. Atim Creek Map Unit Numbers

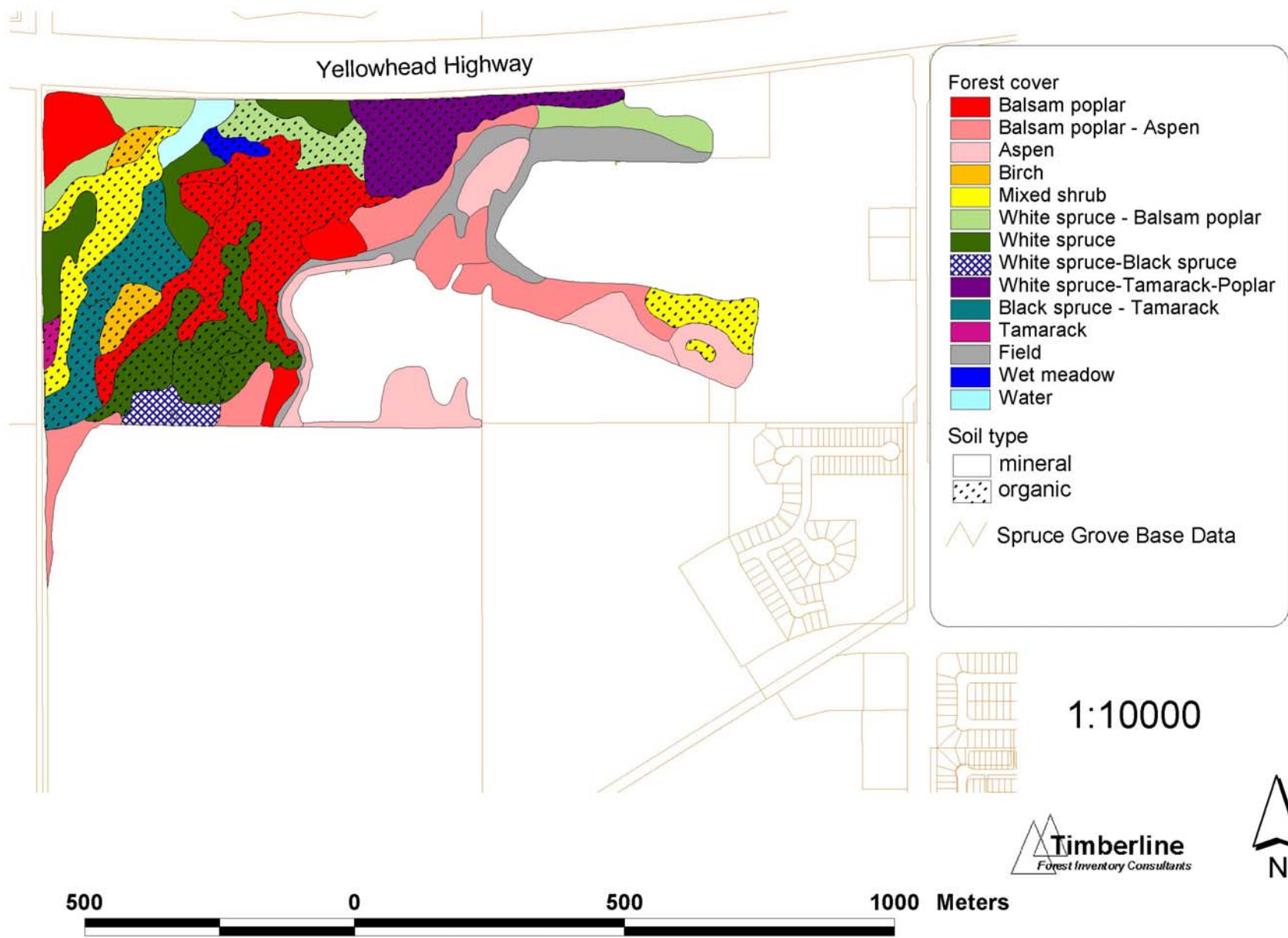


1:10000

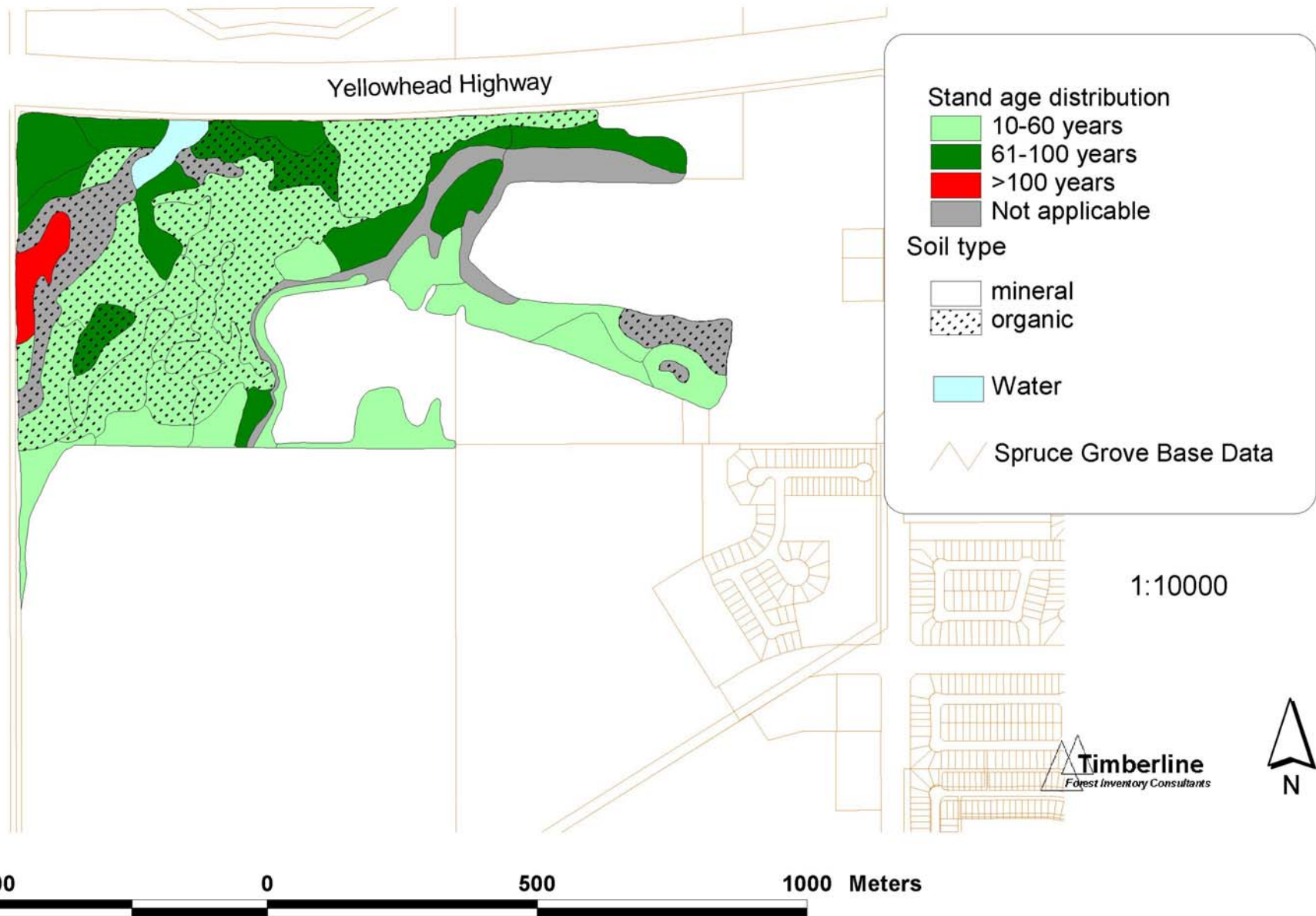




# Figure AC-2. Atim Creek Forest Cover and Soil Type

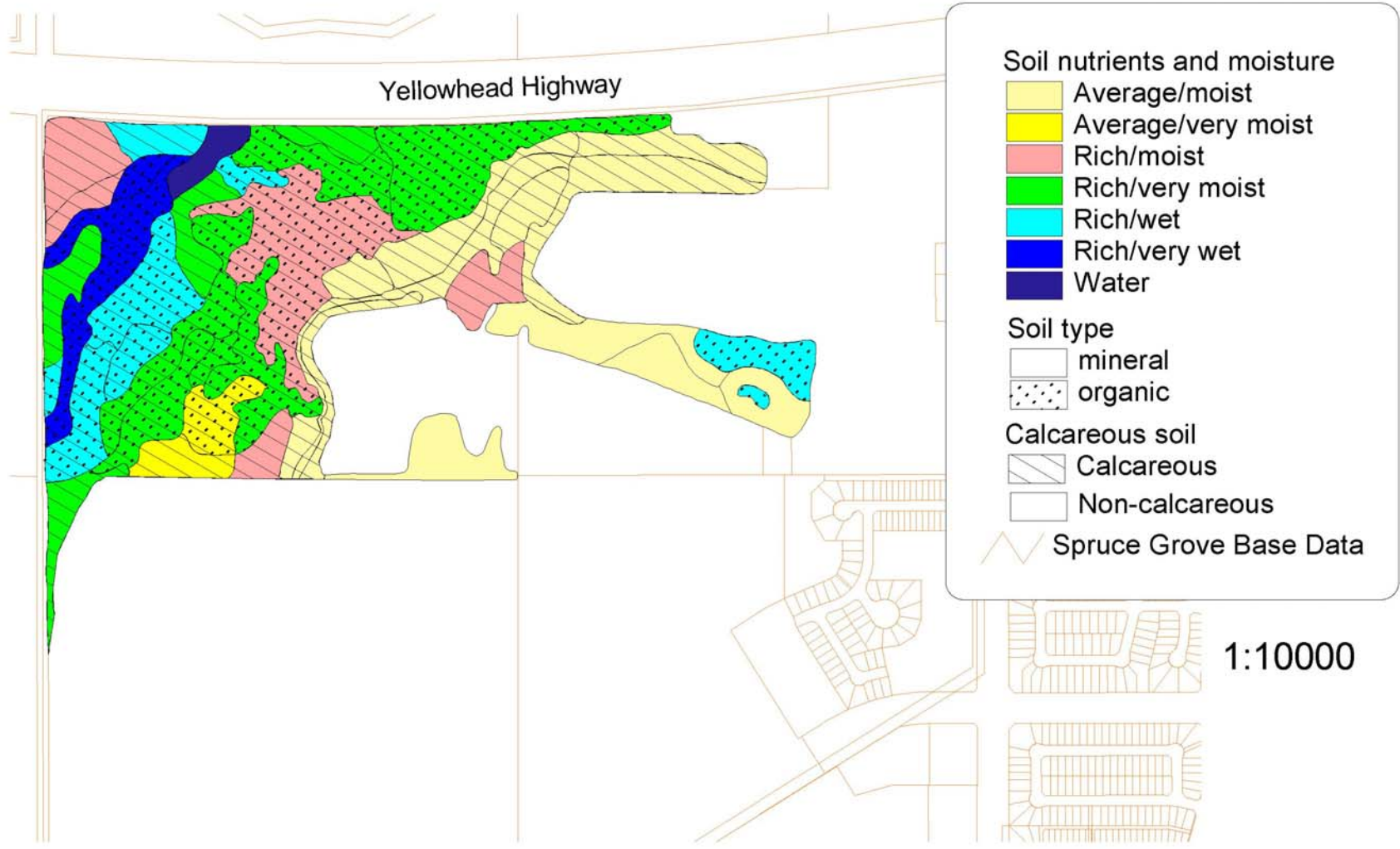


# Figure AC-3. Atim Creek Stand Age Class Distribution





# Figure AC-4. Atim Creek Site Nutrient and Moisture Status



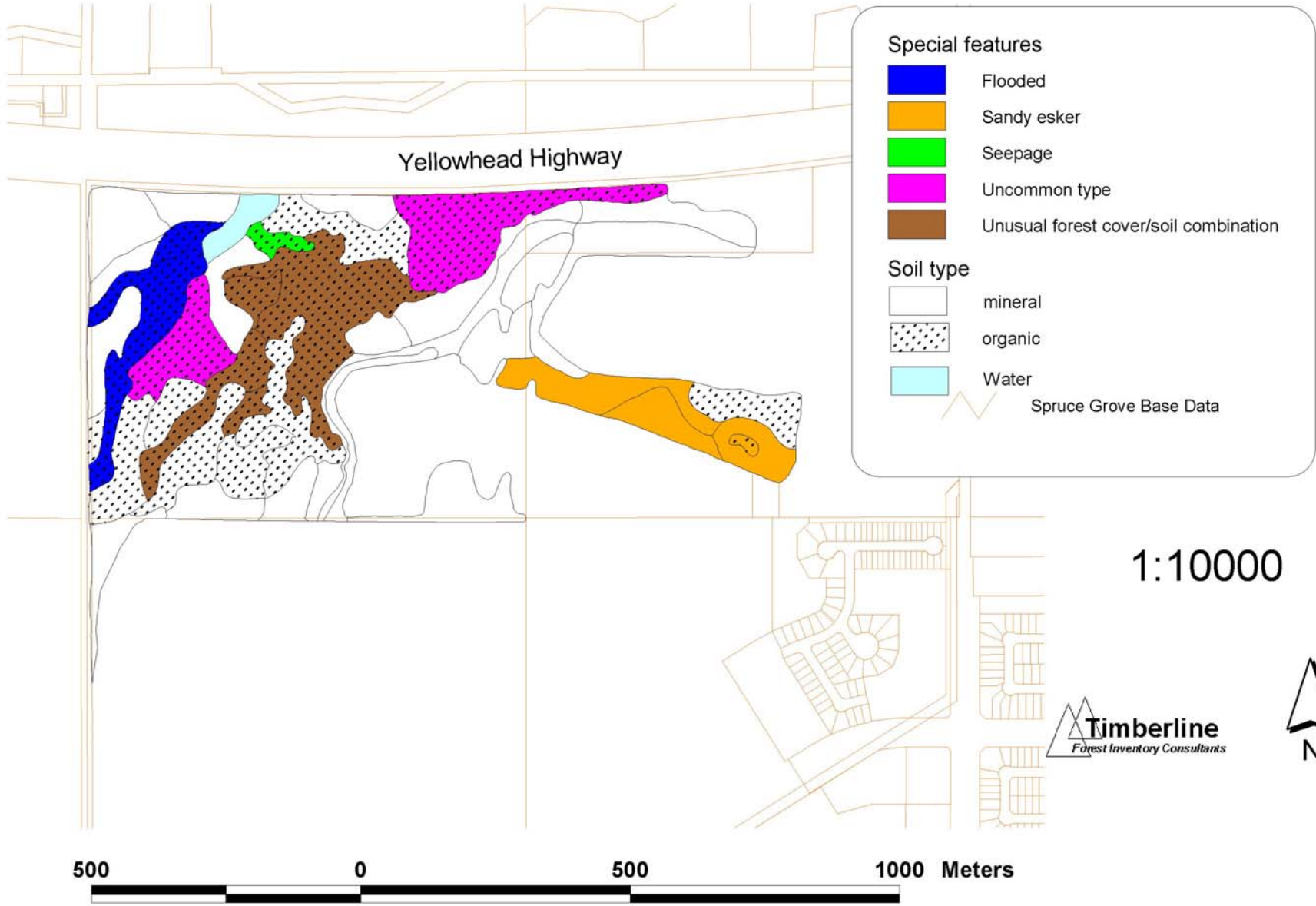
500 0 500 1000 Meters

**Timberline**  
Forest Inventory Consultants



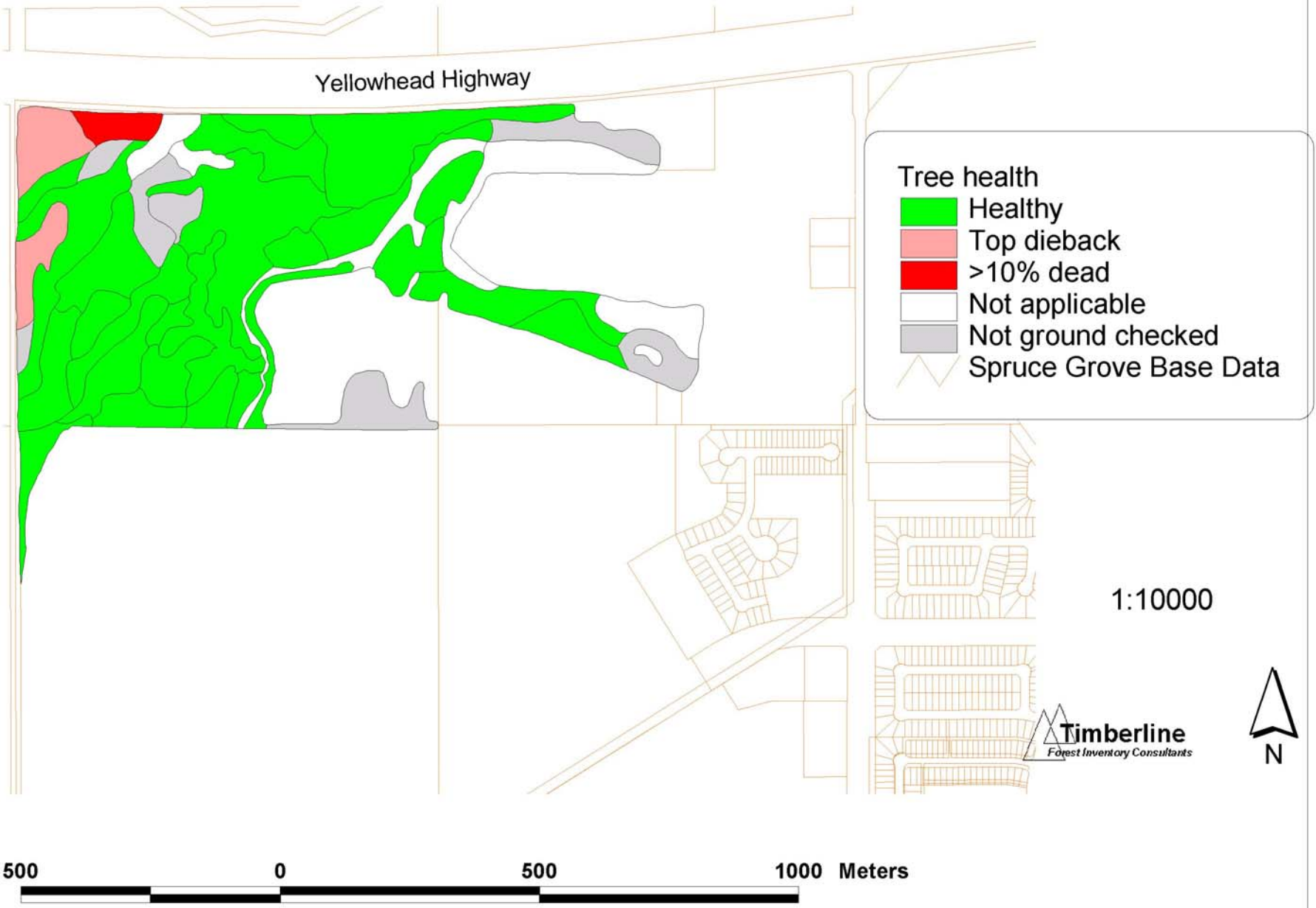
1:10000

# Figure AC-5. Atim Creek Special Features

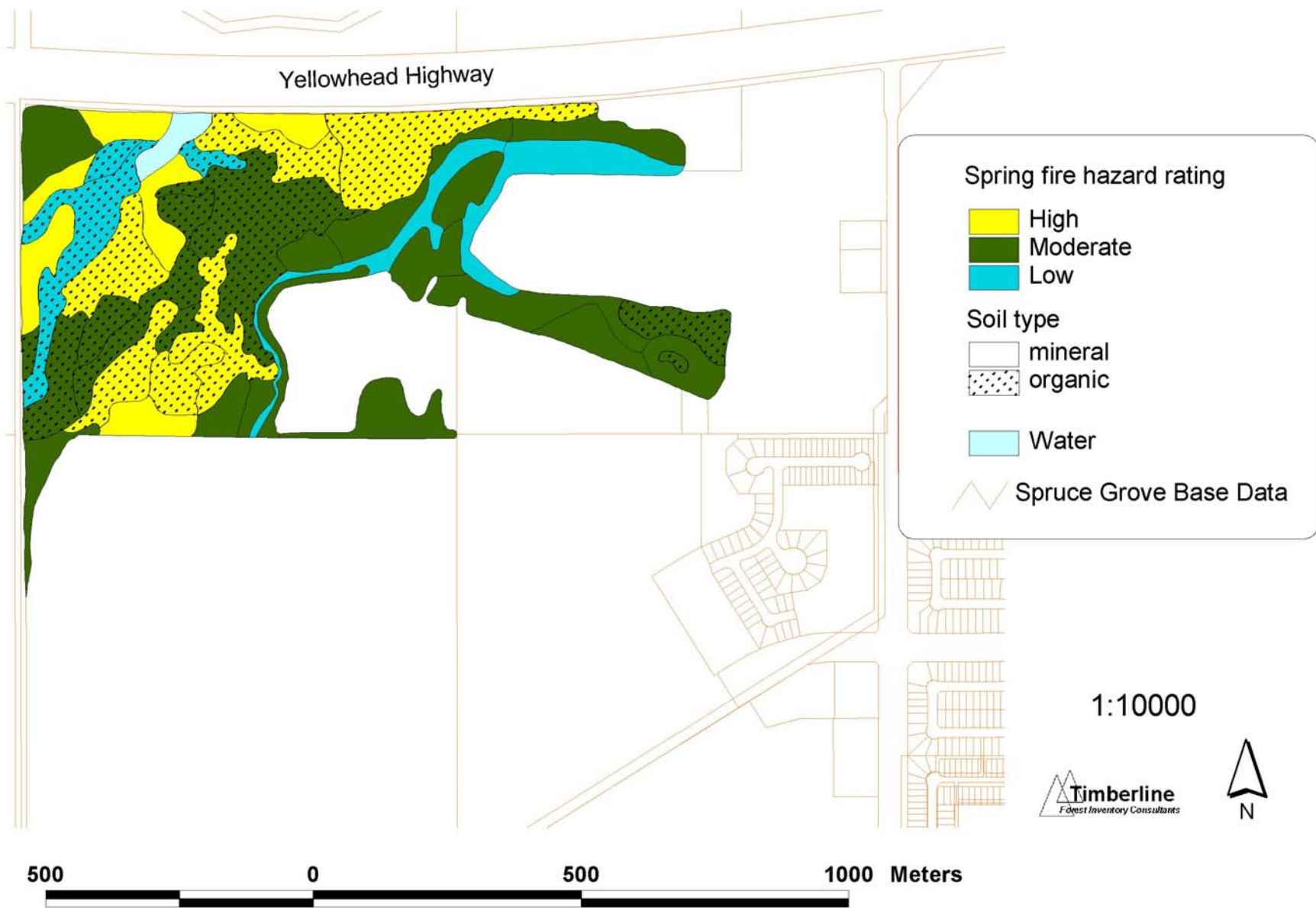




# Figure AC-6. Atim Creek Tree Health Assessment 2004

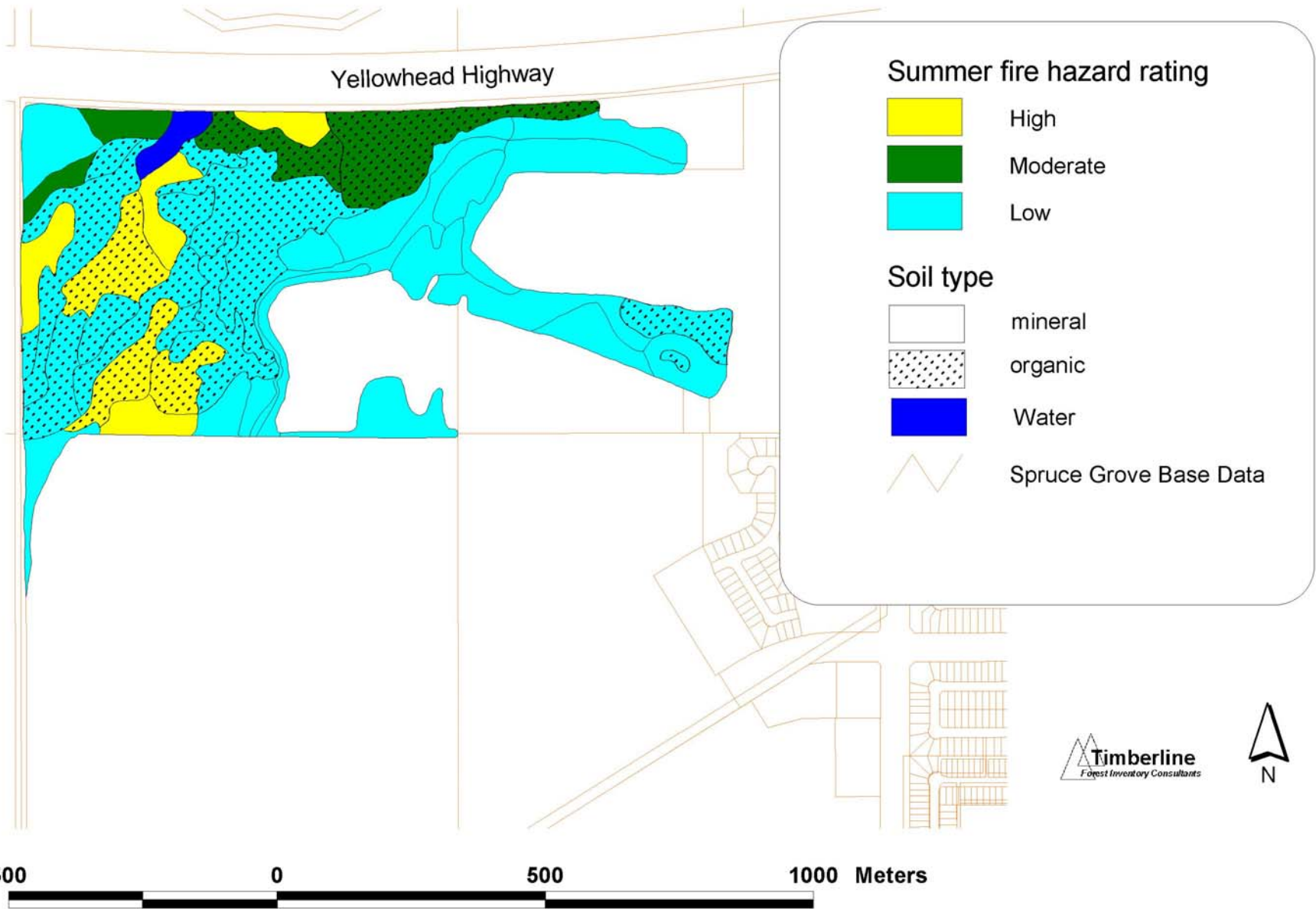


# Figure AC-7. Atim Creek Spring Fire Hazard Potential

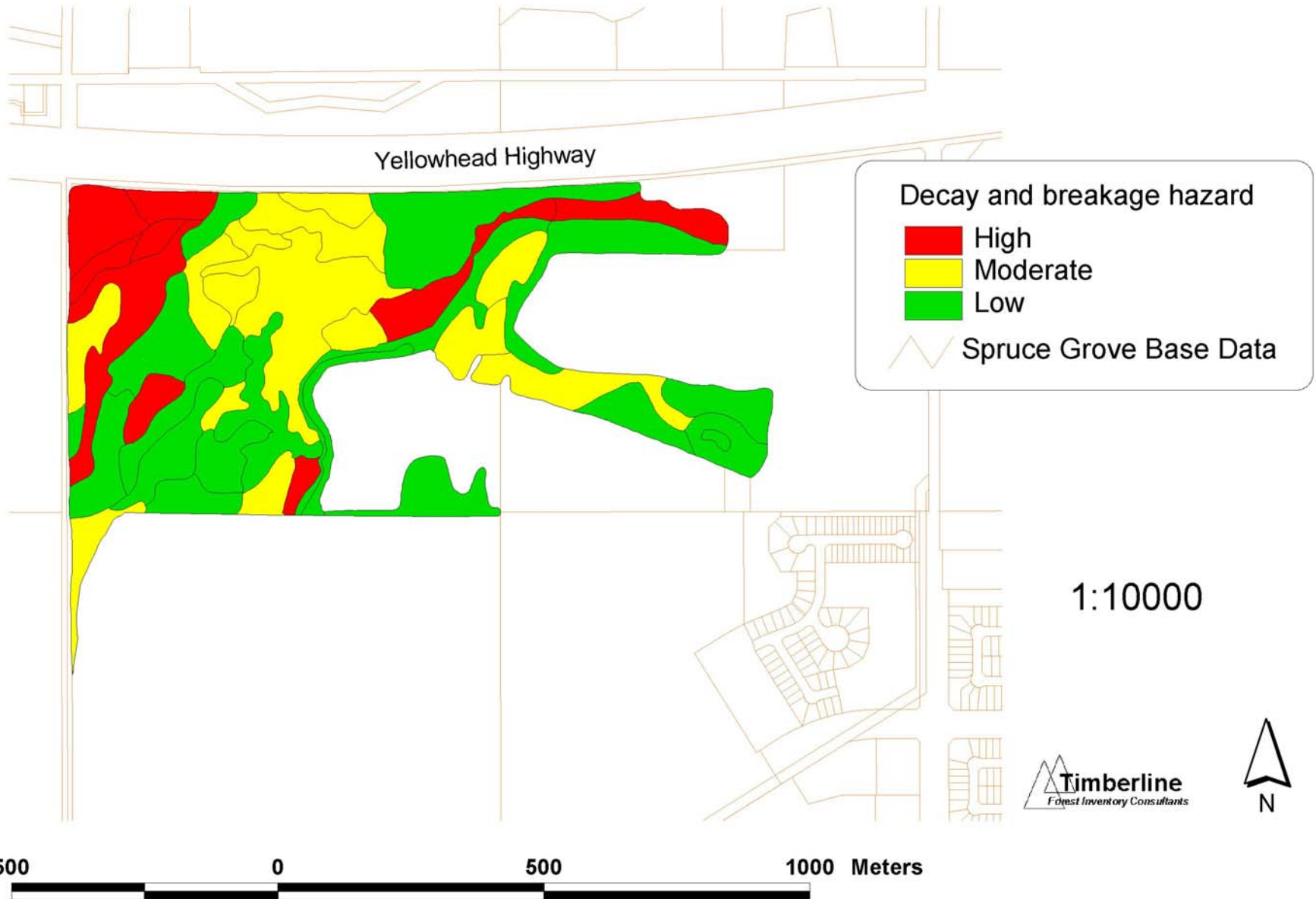




# Figure AC-8. Atim Creek Summer Fire Hazard Potential



# Figure AC-9. Atim Creek Decay and Breakage Hazard

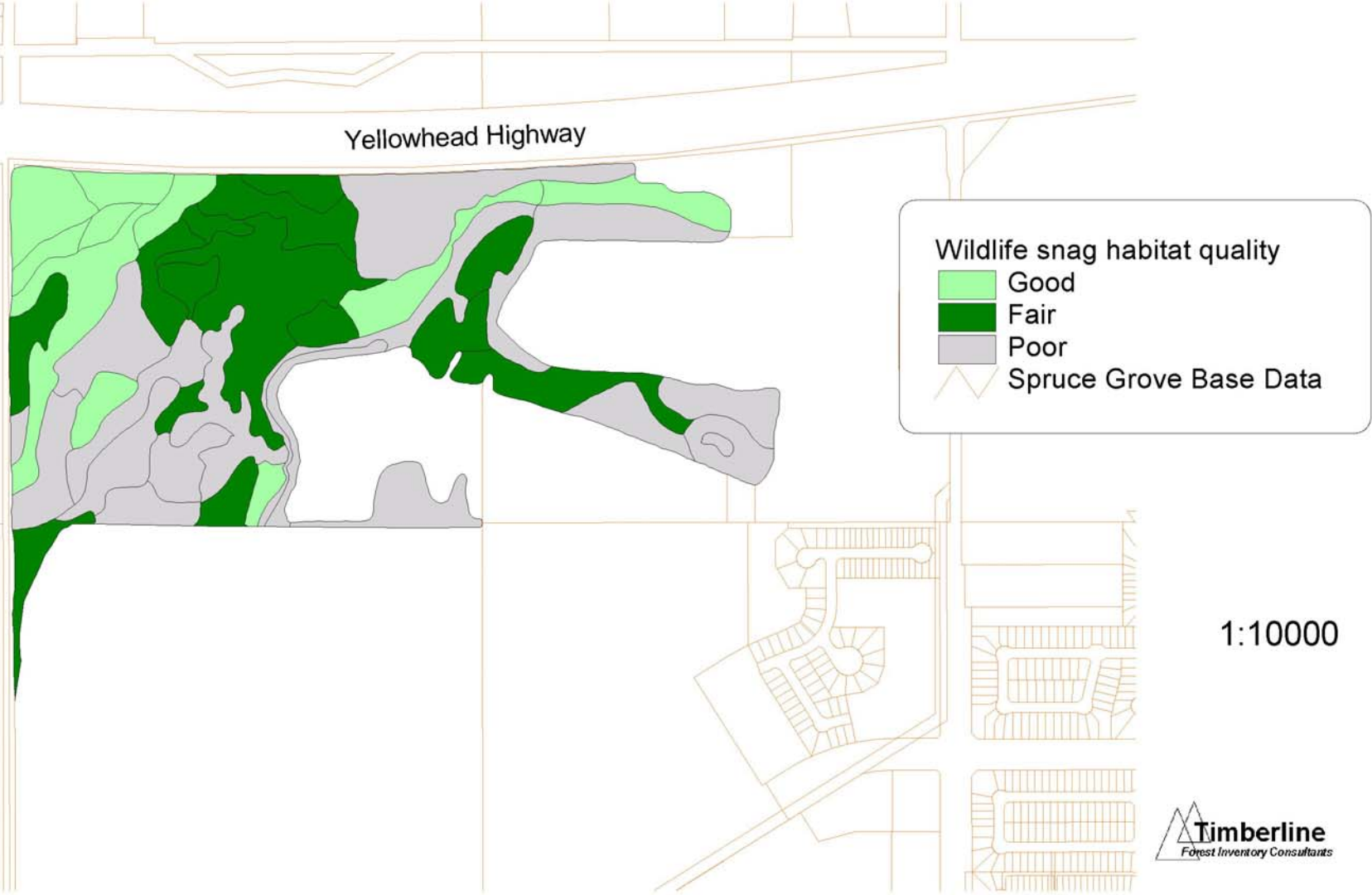




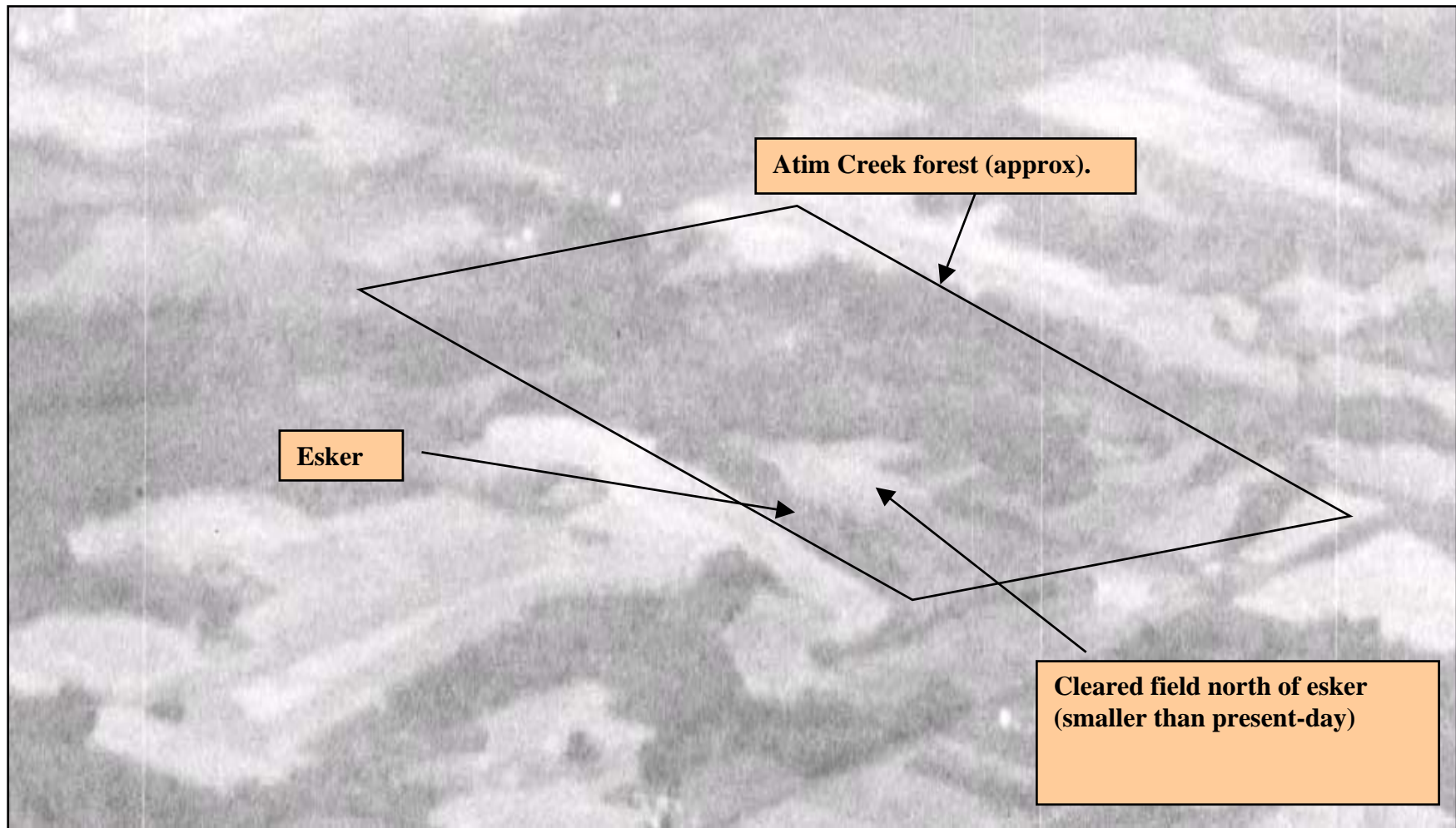
# Figure AC-10. Atim Creek Blowdown Hazard



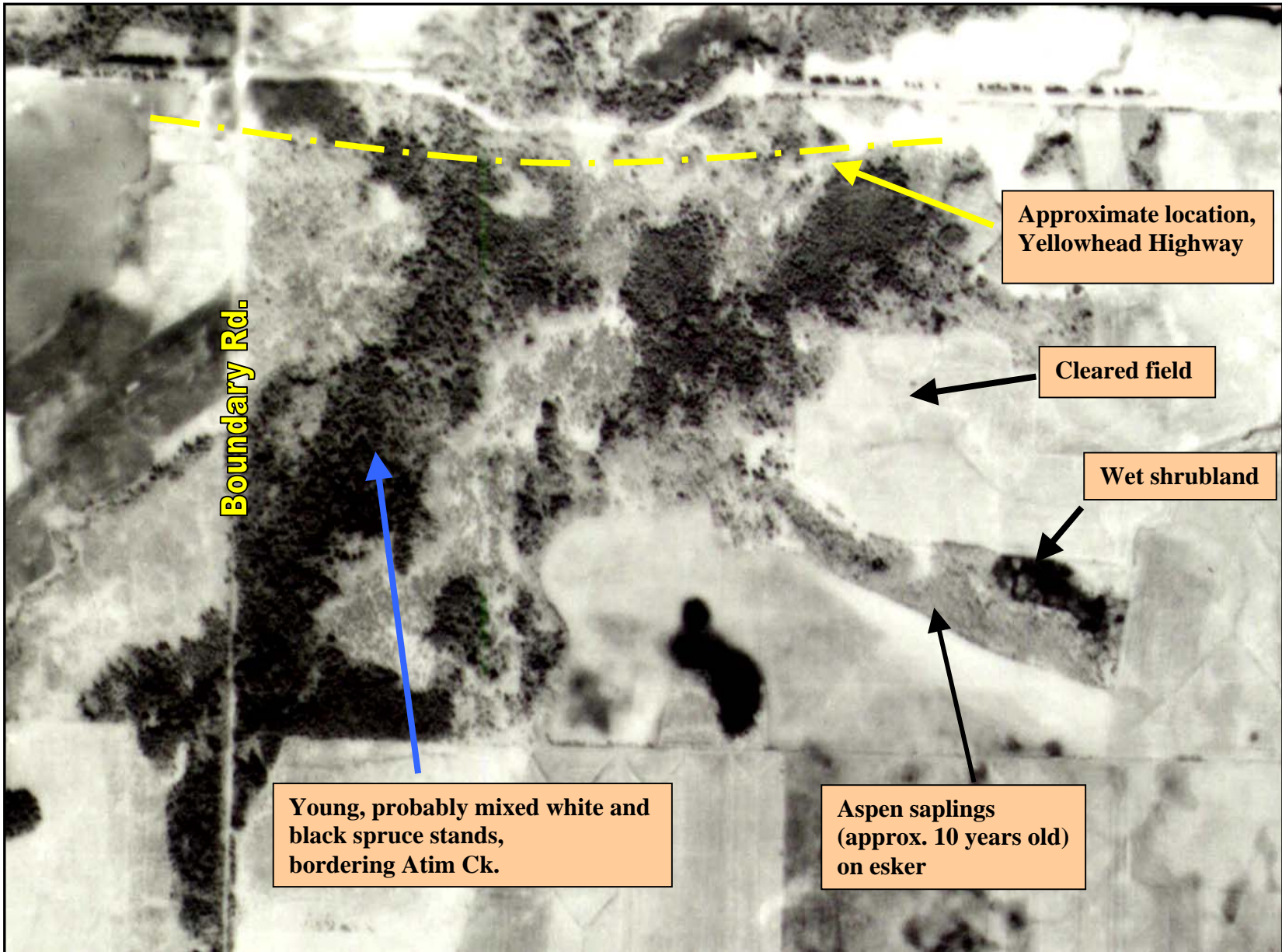
# Figure AC-11. Atim Creek Wildlife Snag Habitat Potential







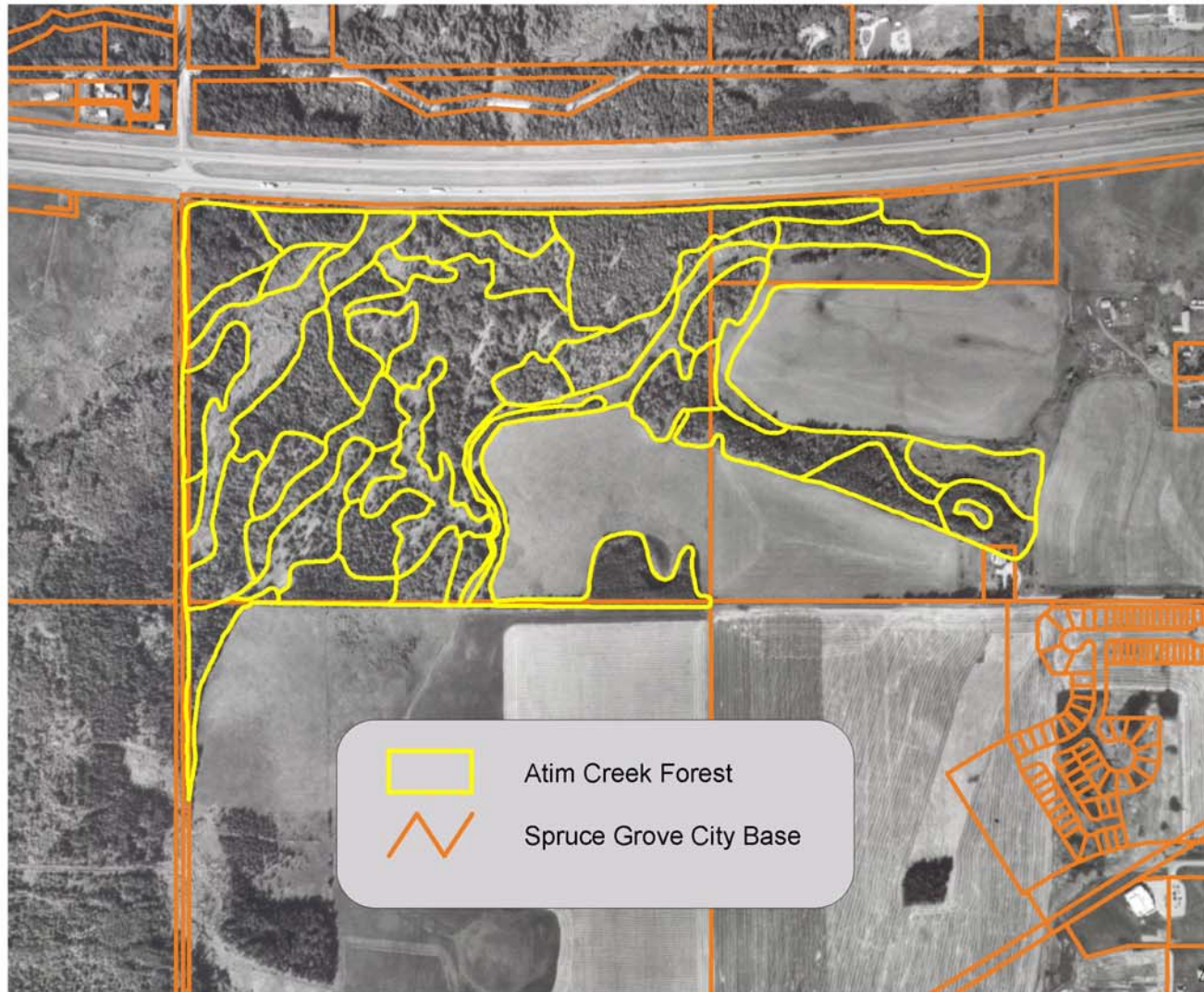
**Figure AC-12. Atim Creek Forest, 1920 oblique photo**



**Figure AC-13. Atim Creek Forest, May 1962 photo**



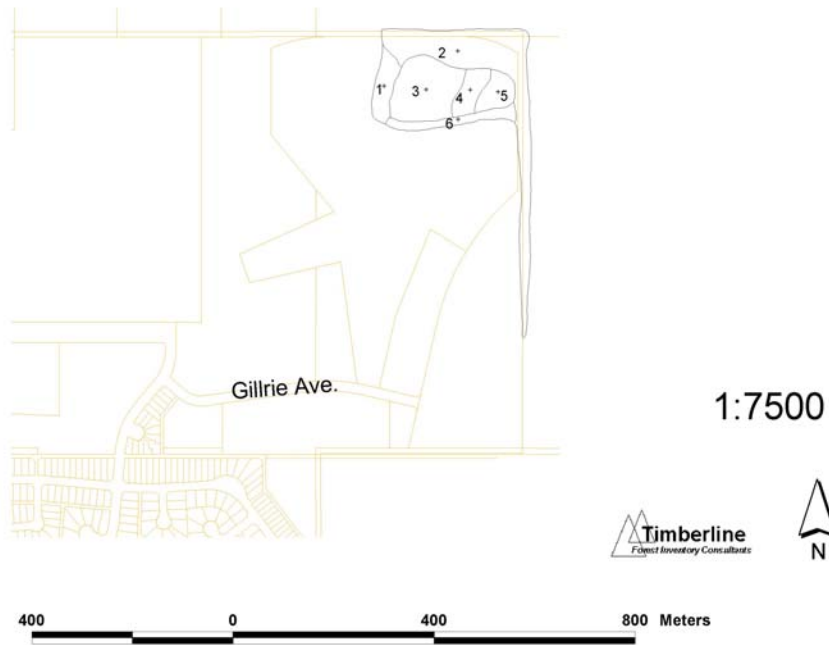
**Figure AC-14. Atim Creek Forest, 1999**



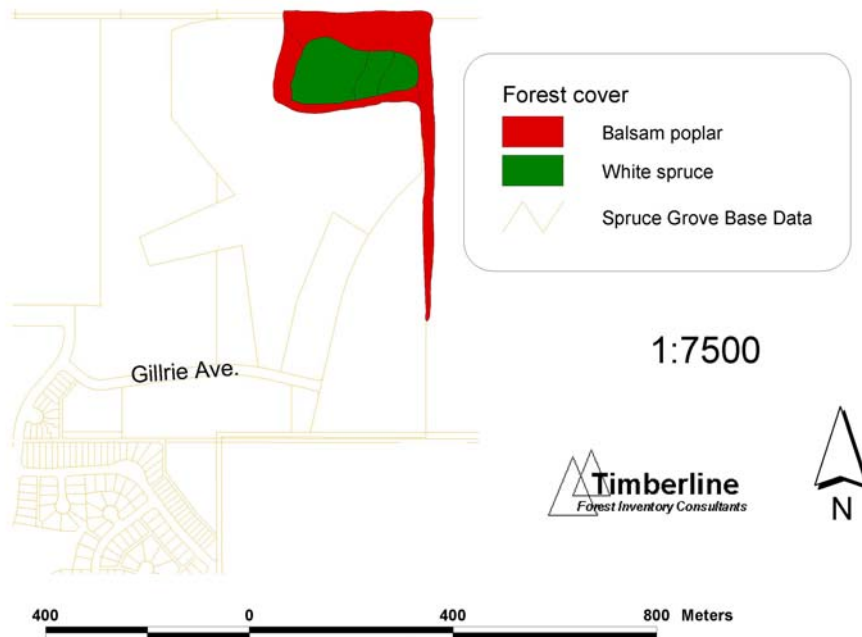
# GroveCo 60 Maps



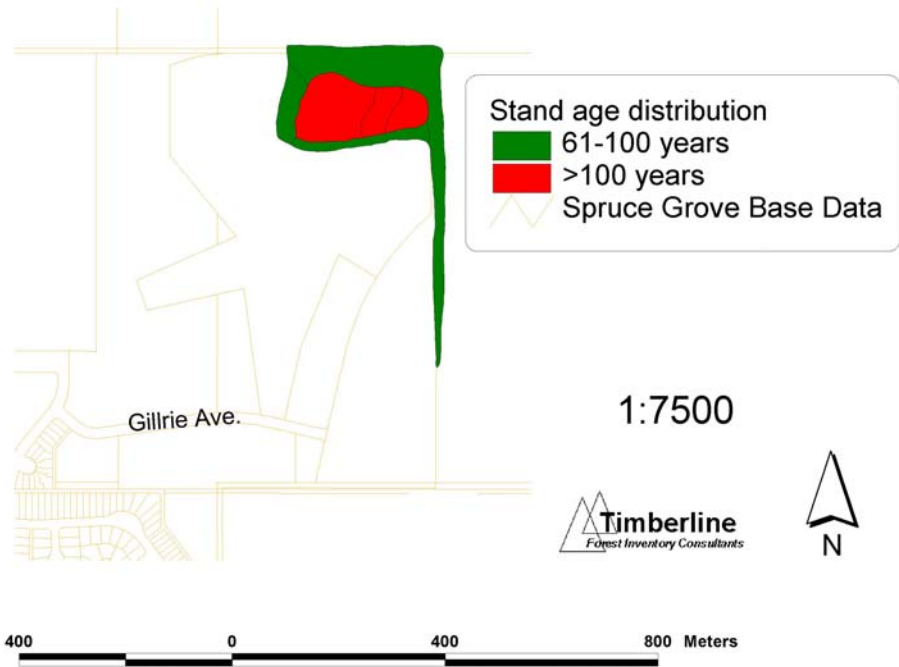
**Figure GC-1. GroveCo Map Unit Numbers**



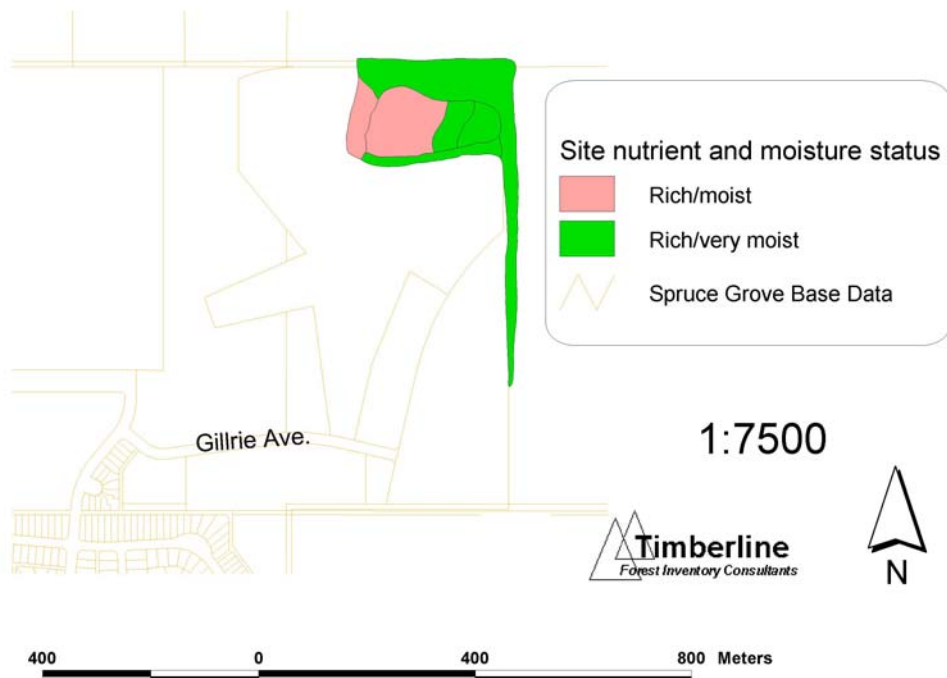
**Figure GC-2. GroveCo Forest Cover**



**Figure GC-3. GroveCo Stand Age Class Distribution**



**Figure GC-4. GroveCo Site Nutrient and Moisture Status**





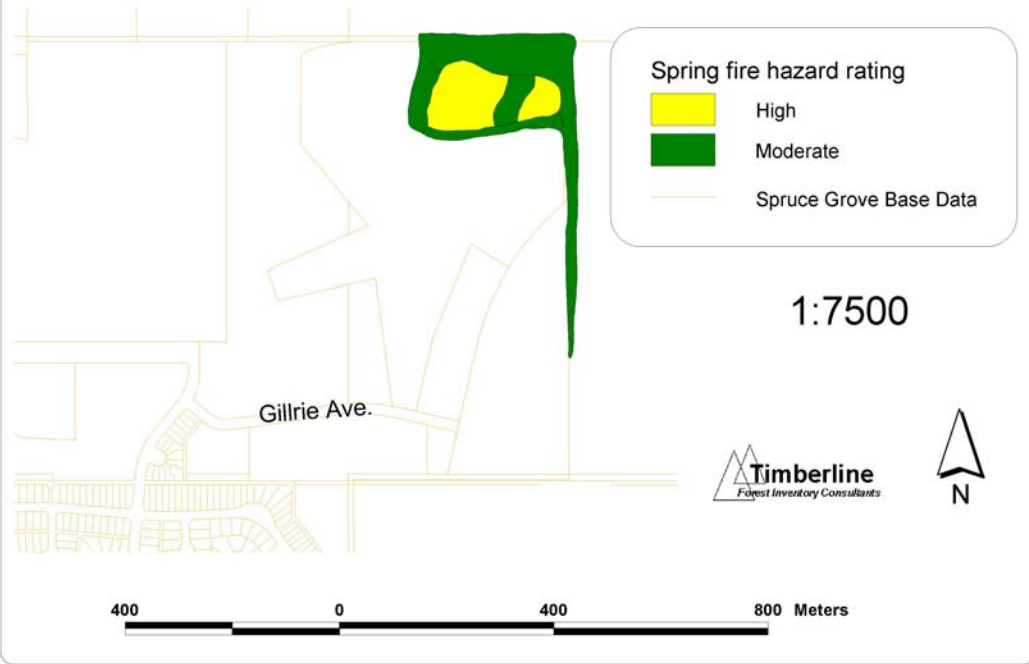
**Figure GC-5. GroveCo Special Features**



**Figure GC-6. GroveCo Tree Health Assessment 2004**



**Figure GC-7. GroveCo Spring Fire Hazard Potential**



**Figure GC-8. GroveCo Summer Fire Hazard Potential**

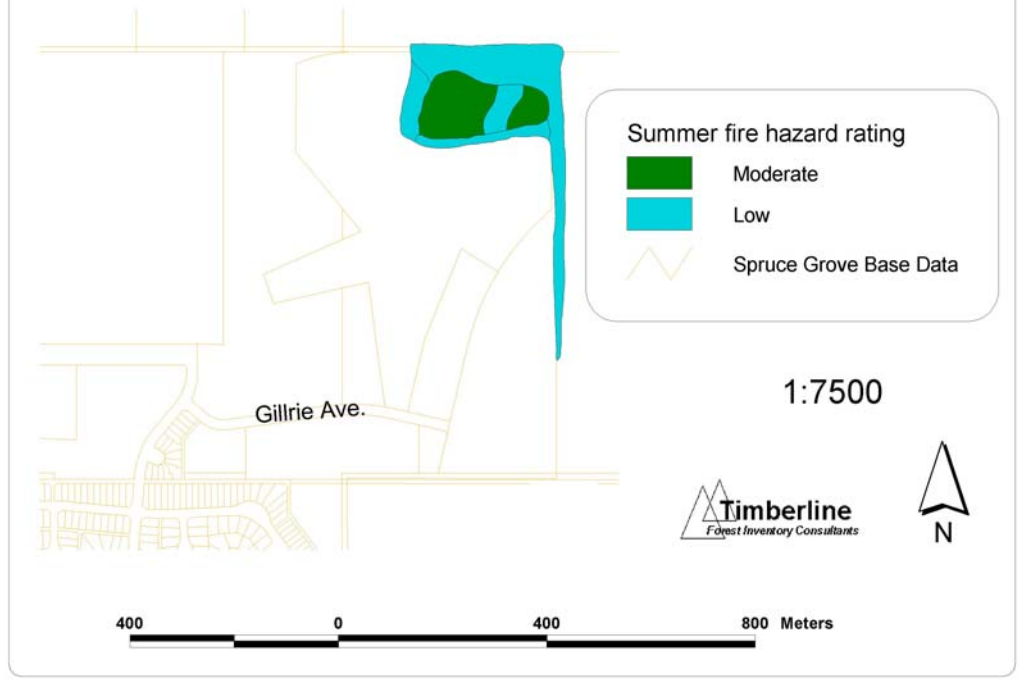




Figure GC-9. GroveCo Decay and Breakage Hazard

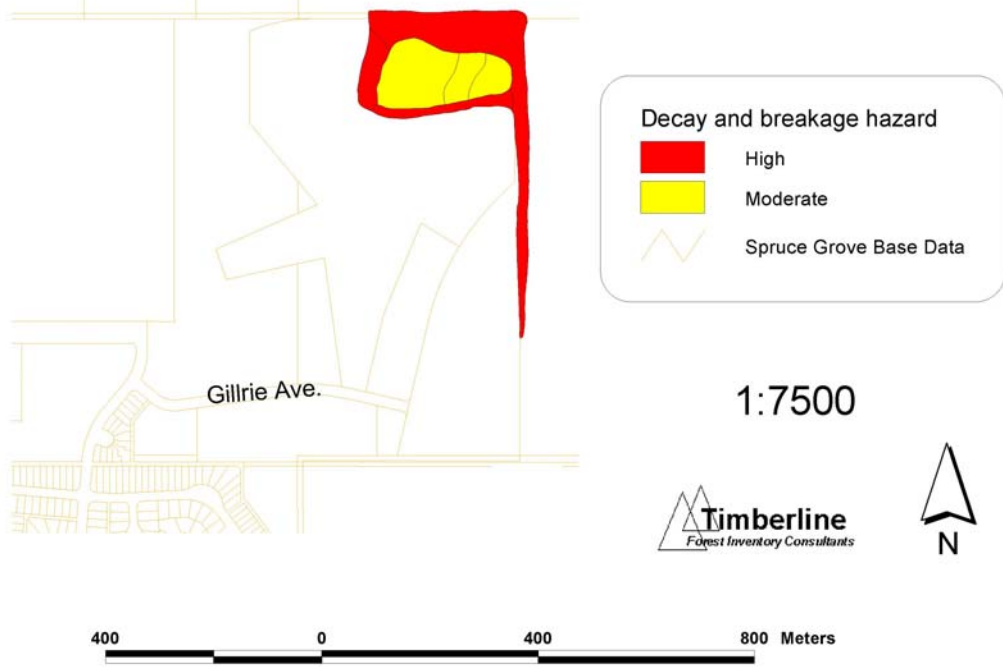
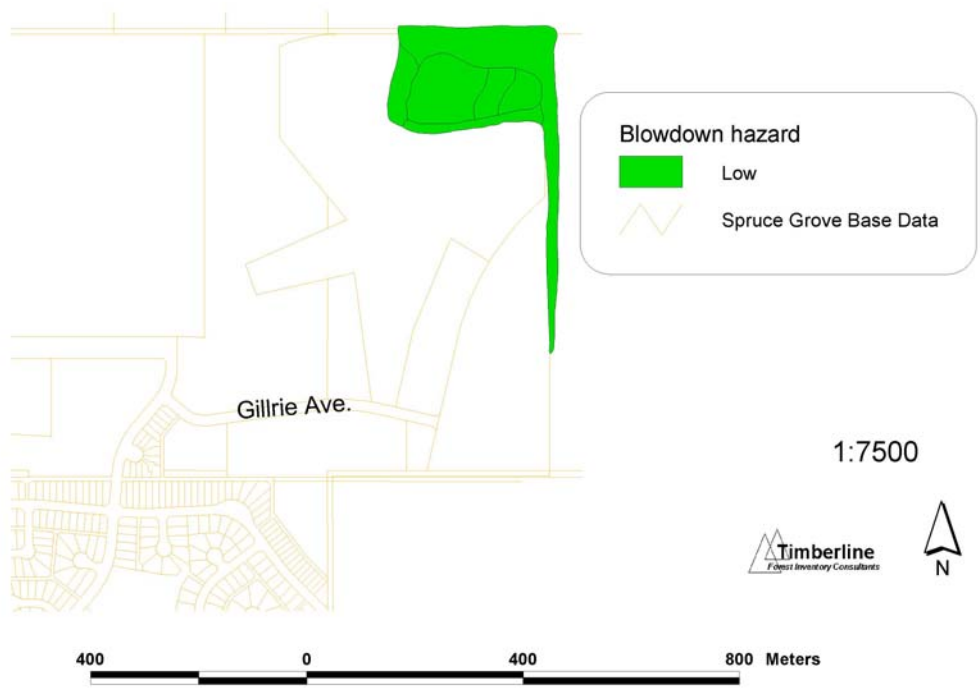
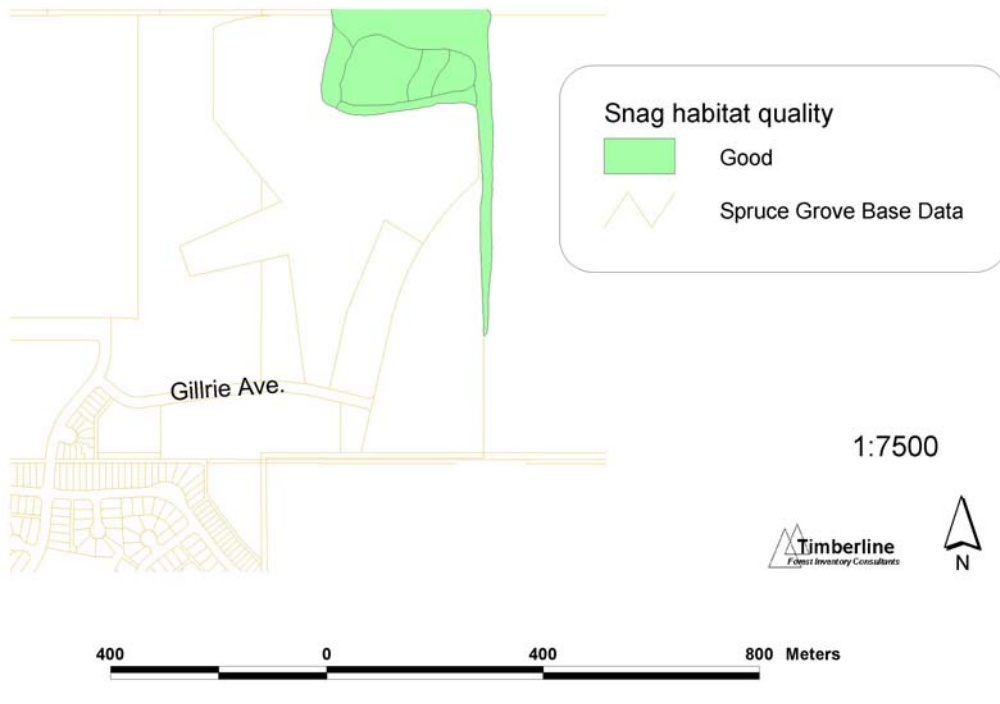


Figure GC-10. GroveCo Blowdown Hazard



**Figure GC-11. GroveCo Wildlife Snag Habitat Potential**

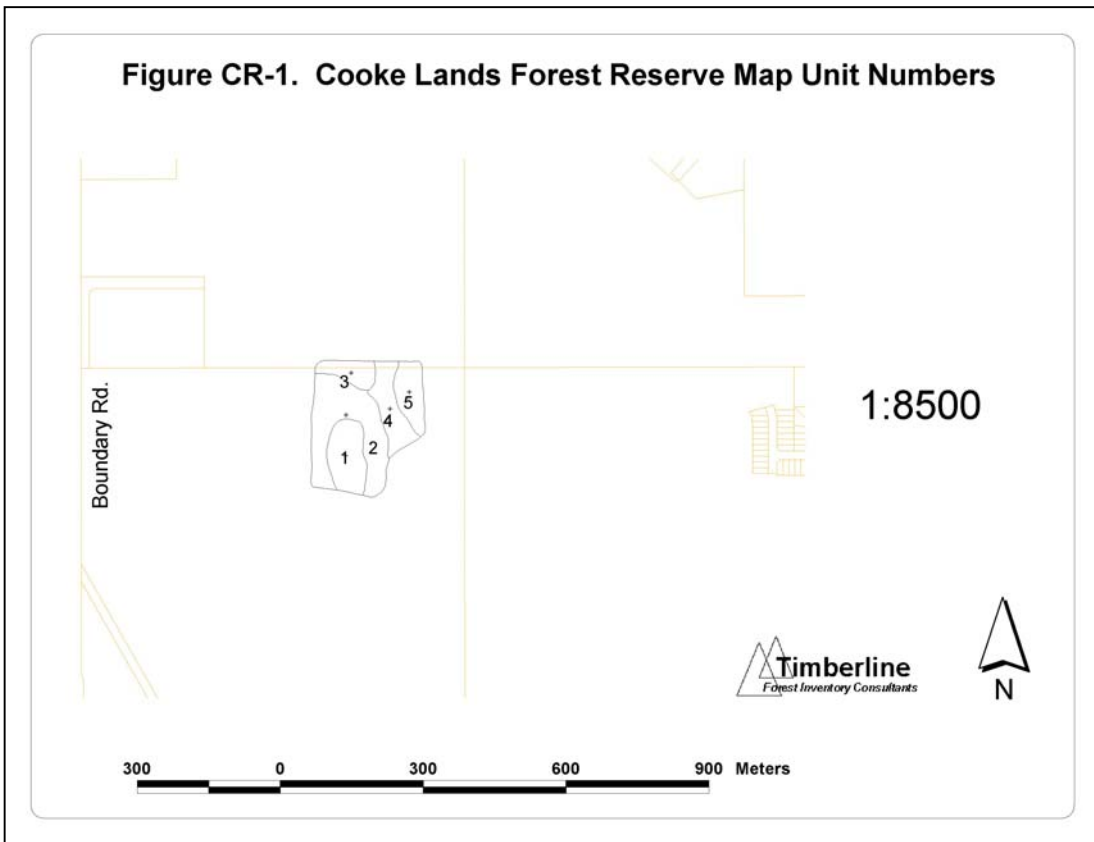




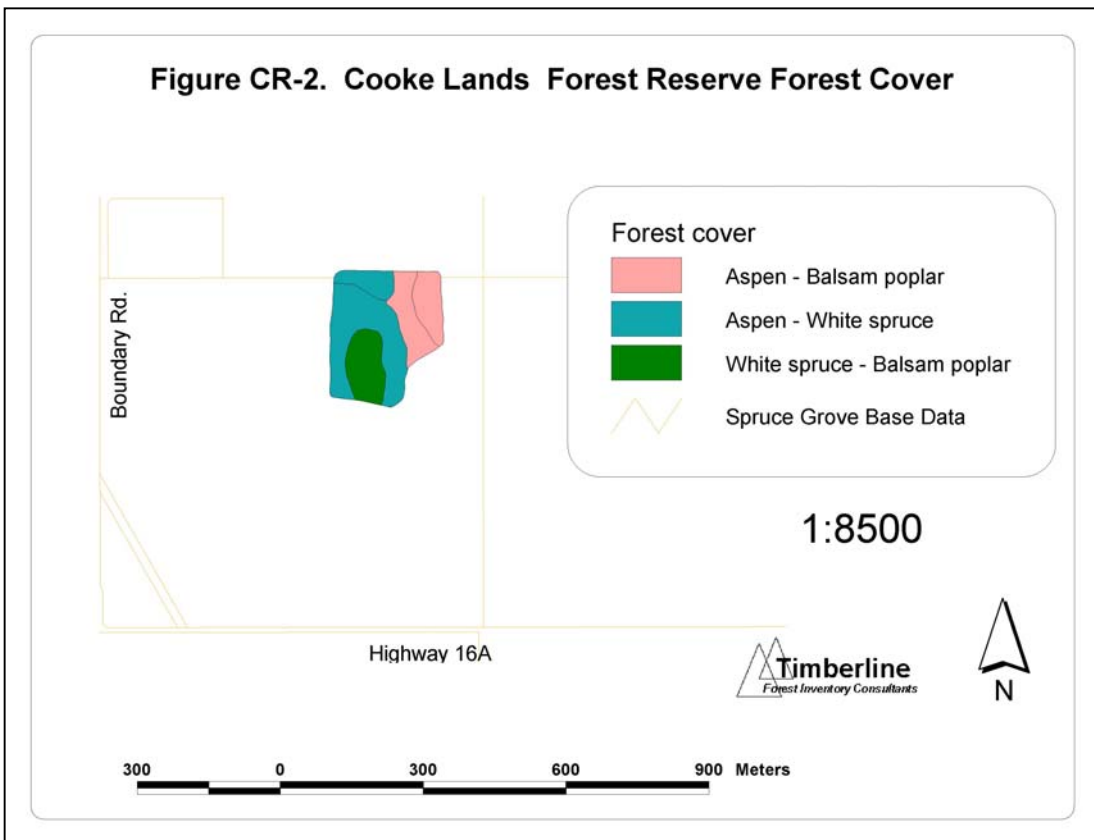
# Cooke Lands Forest Reserve Maps

*Note: no special features map*

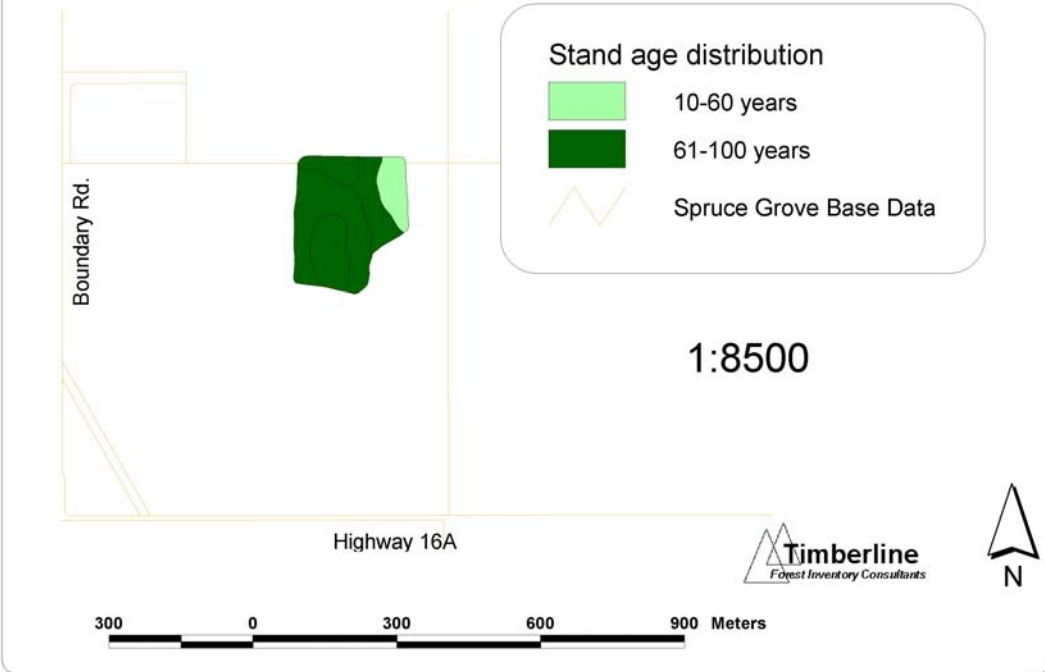
**Figure CR-1. Cooke Lands Forest Reserve Map Unit Numbers**



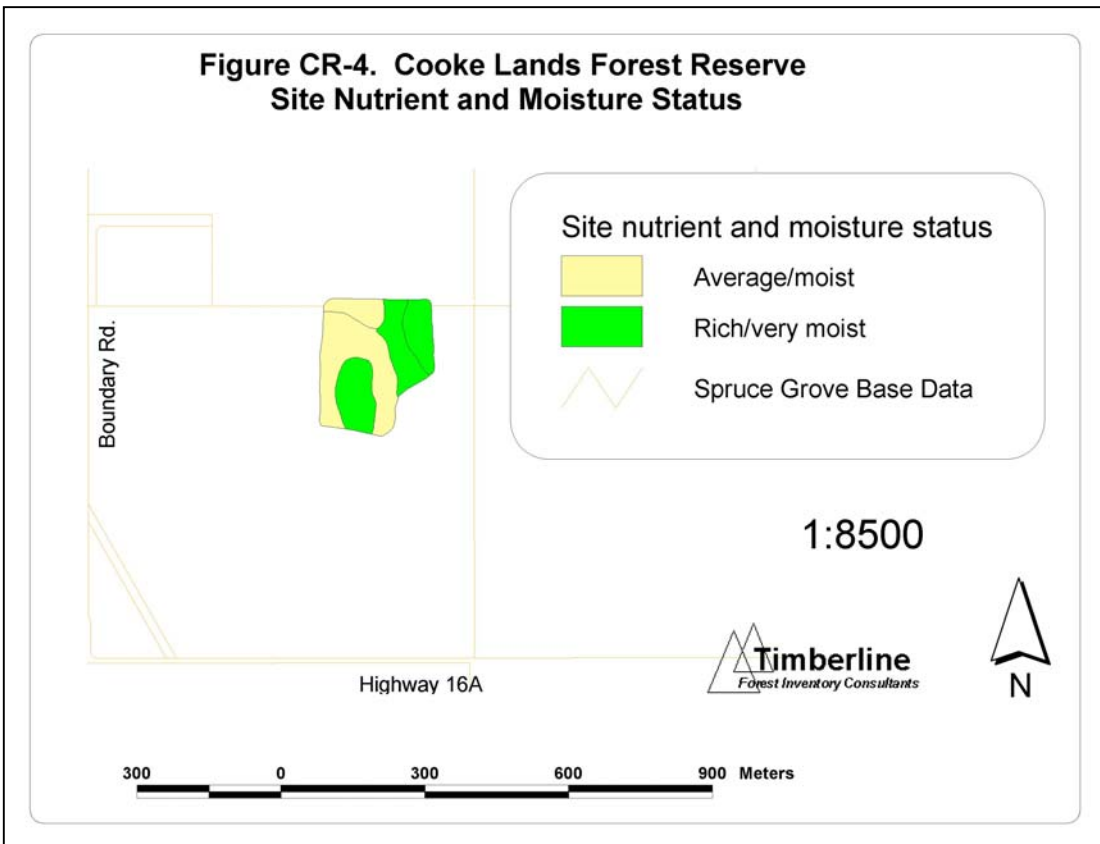
**Figure CR-2. Cooke Lands Forest Reserve Forest Cover**



**Figure CR-3. Cooke Lands Forest Reserve  
Stand Age Class Distribution**

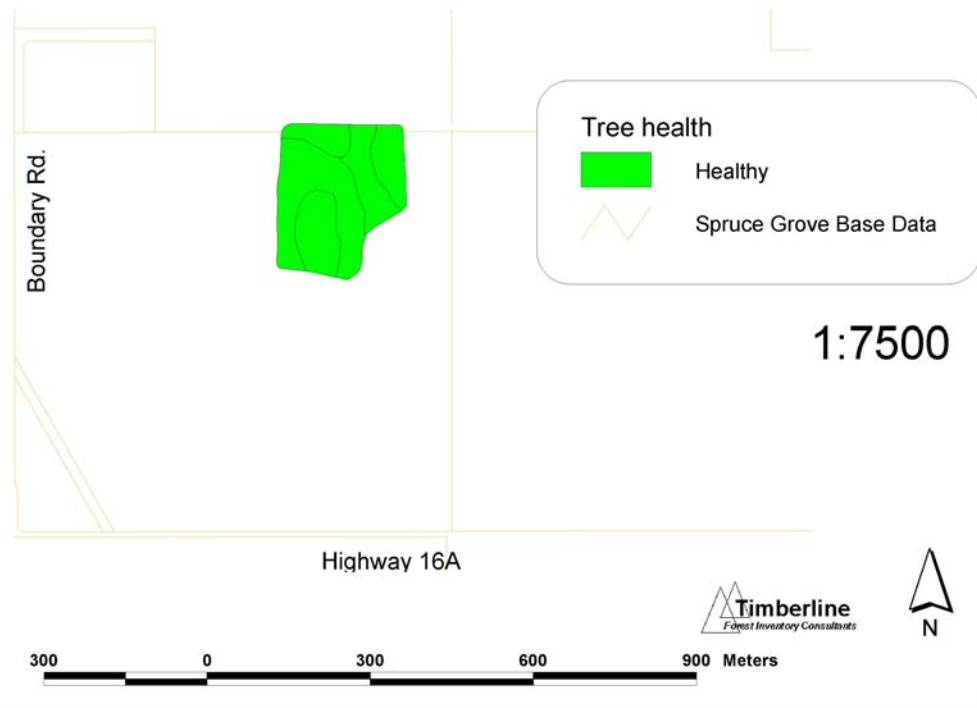


**Figure CR-4. Cooke Lands Forest Reserve  
Site Nutrient and Moisture Status**

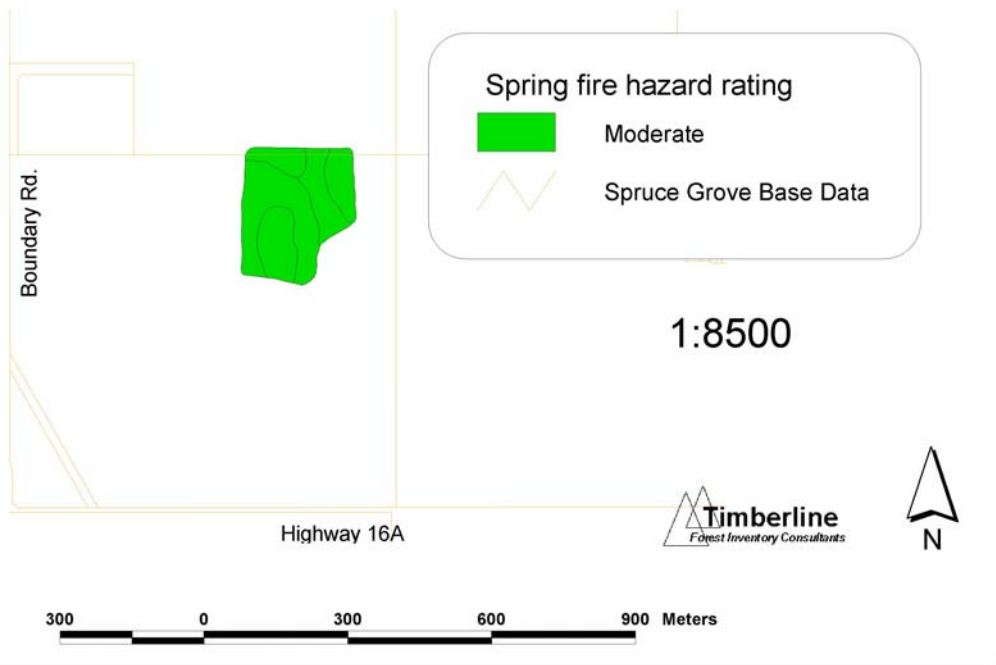




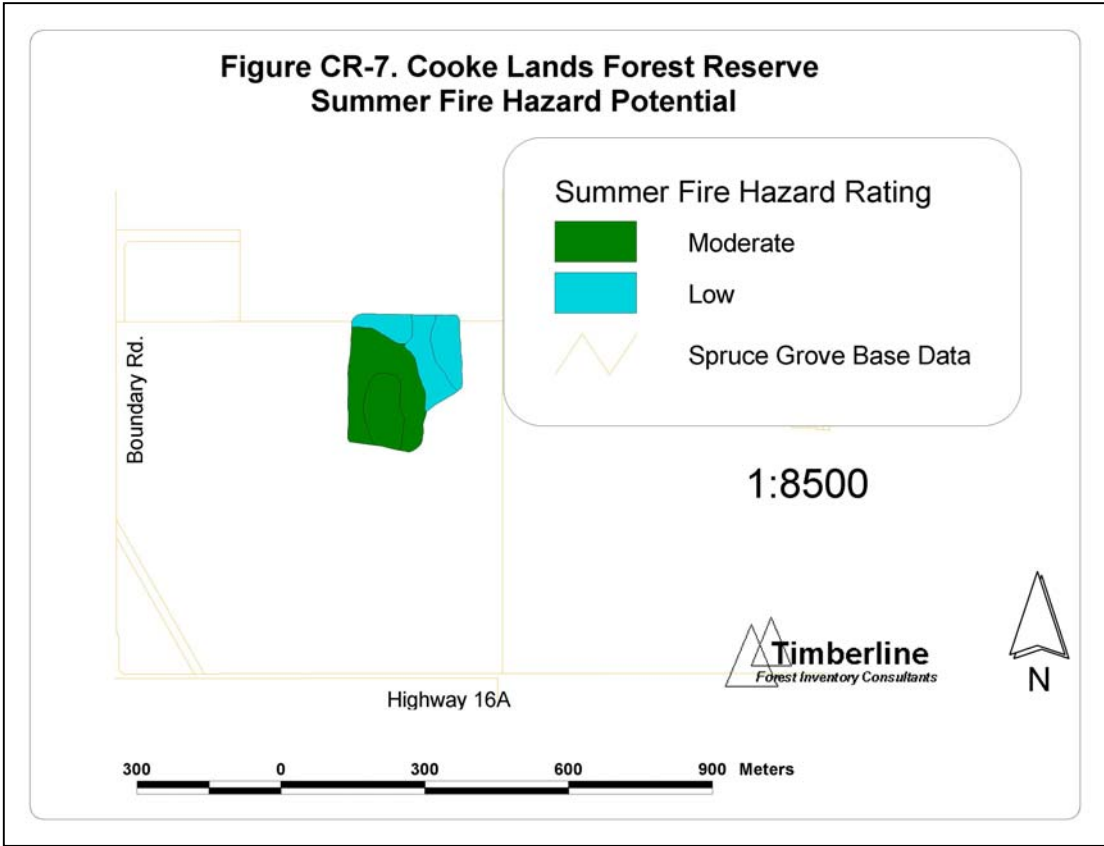
**Figure CR-5. Cooke Lands Forest Reserve Tree Health 2004.**



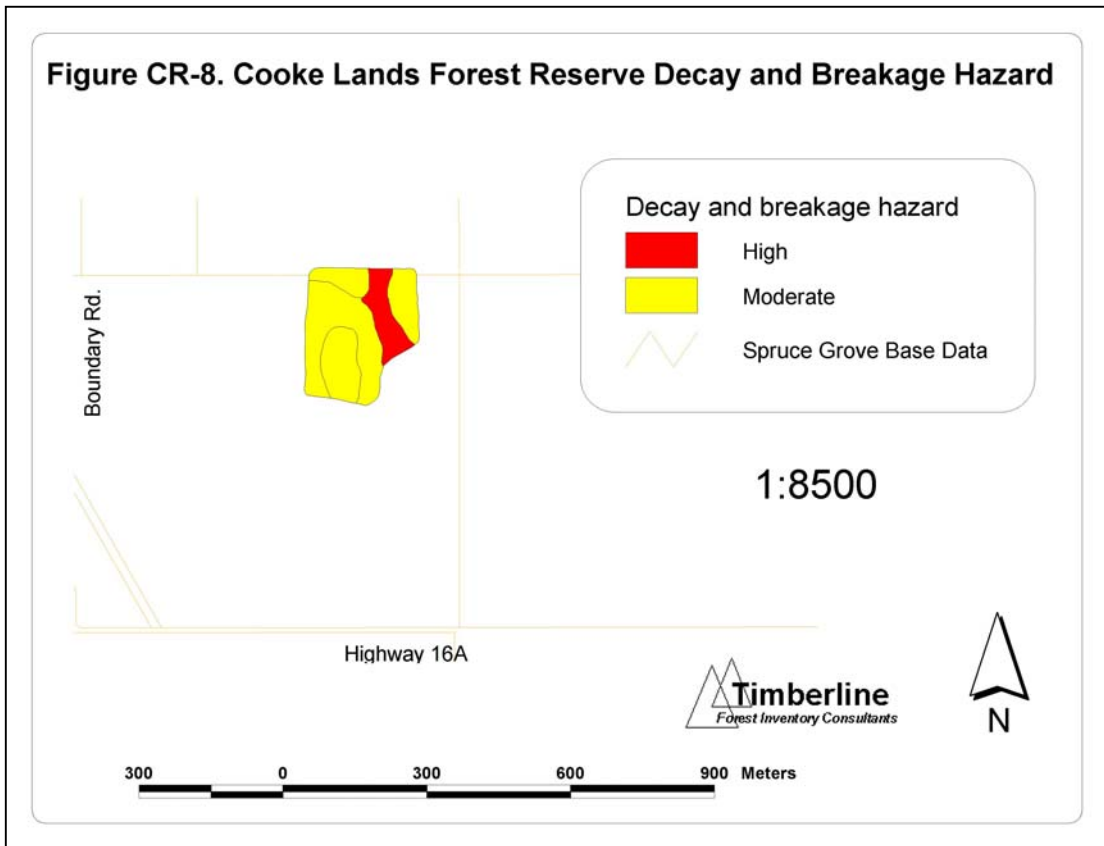
**Figure CR-6. Cooke Lands Forest Reserve Spring Fire Hazard Potential**



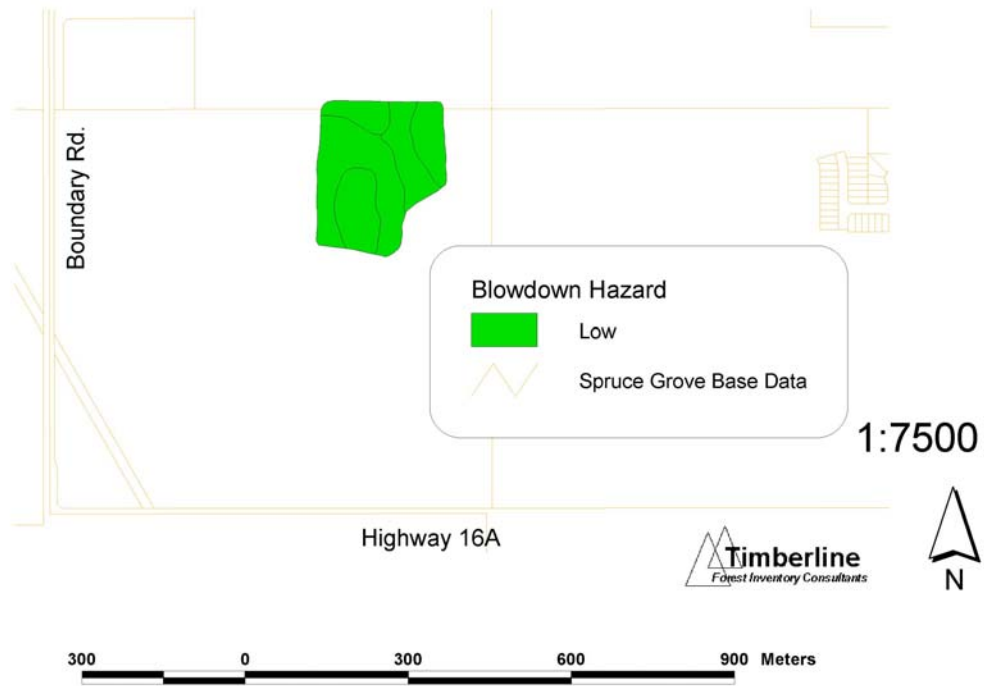
**Figure CR-7. Cooke Lands Forest Reserve  
Summer Fire Hazard Potential**



**Figure CR-8. Cooke Lands Forest Reserve Decay and Breakage Hazard**



**Figure CR-9. Cooke Lands Forest Reserve Blowdown Hazard**



**Figure CR-10. Cooke Lands Forest Reserve Wildlife Snag Habitat Potential**





