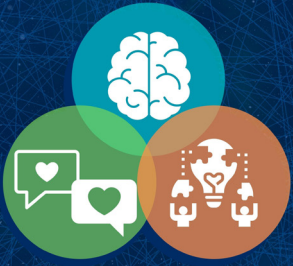


WISE-MIND WEDNESDAYS FOR YOUTH

WEDNESDAYS
(IN-PERSON) STARTING
FEBRUARY 2, 2022
4:30-5:30PM
sprucegrove.org/youth



We are Hiring!

Join us and see
why we are the
organization of choice!

PROJECT PLANNER - MUNICIPAL DEVELOPMENT PLAN

Close date:
Thursday, Jan. 20, 2022

Salary Range: |
\$86,190 - \$106,470

LABOURER - ECO CENTRE TEMPORARY PART TIME

Close date:
Wednesday, Jan. 19, 2022

Hourly Rate: \$20.86

OPERATOR - PARK & OPEN SPACES

Close date:
Thursday, Jan. 27, 2022

Hourly Rate:
\$31.31 (probationary) to
\$33.88 (qualified)

BYLAW OFFICER

Close date:
Tuesday, Jan. 18, 2022

Salary Range:
\$54,934 - \$67,859

CASE MANAGER

Close date:
Saturday, Jan. 22, 2022

Hourly Rate:
\$37.08 to \$45.80

SPRUCEGROVE.ORG/CAREERS

Committee of the Whole meeting Monday, Jan. 17, 2022

As the situation with the coronavirus (COVID-19) continues to rapidly change, the health and safety of our staff and our community is our top priority, and we are committed to taking the necessary steps to prevent the spread of the virus, while also ensuring that we continue to provide essential services to our residents.

Spruce Grove's Committee of the Whole meeting, scheduled to take place on January 17 starting at 6 p.m. in Council Chambers will not be open to in-person attendance by the public. Members of the public will be able to watch the Council meeting online at sprucegrove.org/livecouncil. Recordings are also available following each meeting.

City Council and Committee of the Whole agendas and meeting minutes are available at sprucegrove.org/agenda.



LET'S TALK ABOUT OUR FUTURE.

Join one of our webinars to hear about the Climate Change Action Plan that will be presented to Council. You'll have an opportunity to tell us what you think about the recommendations in the plan.

- Tuesday, Jan. 18 at noon
- Tuesday, Jan. 18 at 7 p.m.
- Wednesday, Jan. 19 at noon

Register to receive a Zoom link.
sprucegrove.org/climatechange



Notice of development permit decisions

The following development permits for discretionary uses and variances have been approved under the provisions of the Land Use Bylaw. This list does not include Permitted Uses. For a full list of all Development Permit decisions, as well as how to appeal a decision of the Development Officer to the Subdivision and Development Appeal Board, please visit sprucegrove.org/devpermitnotices. Please direct any questions to the Planning and Development Department at 780-962-7582, Monday to Friday from 8:30 a.m. to 4:30 p.m.

Permit #	Legal Land Description	Project Address
Use: Discretionary PL20210000869	Plan: 1524401, Block: 10, Lot: 35	63 Springbrook Wynd
	Home occupation offering beauty salon and spa services	
PL20210000872	Plan: 0523813, Block: 5, Lot: 61	36 Spring Gate
	To construct a secondary suite in the basement of an existing single detached dwelling	
PL20210000873	Plan: 2122532, Block: 1, Lot: 8	16 Emerald Way
	To construct a single detached dwelling with attached garage and deck to be used as a show home	
Use: Variance PL20210000879	Plan: 165RS, Block: 12, Lot: 4	25 Belmont Cres
	Variance to the minimum required rear yard setback of the existing detached garage and to the maximum allowable projection of the eaves	

Danger! Thin Ice!

Please stay off the ponds in Spruce Grove. For your safety, accessing the ponds at any time of the year is prohibited.

sprucegrove.org/pondsafety



Stay connected with our CITYPULSE E-NEWSLETTER

Stay up-to-date, stay informed.
Get the CityPulse e-newsletter with all the latest news, info, and upcoming events right to your inbox!

sprucegrove.org/CityPulse

SUBSCRIBE
TODAY

Download the app
to find supports
and resources
in our community.



SPRUCEGROVE.ORG/HELPSSEEKER

