

## CityPulse E-Newsletter

Be in the know! Our bi-weekly e-newsletter is a great way to stay informed. From City news, service updates, programs, events, and initiatives, you'll get the information you need to know.

[sprucegrove.org/CityPulse](http://sprucegrove.org/CityPulse)



## Events and Programs

### Tri Municipal Region Fall Info Night

Learn about recreation, culture, and leisure opportunities available this fall and winter. The Tri Municipal Region Fall Info Night is Aug. 24 at the TransAlta Tri Leisure Centre. Details at [sprucegrove.org/InfoNight](http://sprucegrove.org/InfoNight).



### Youth at the Log Cabin

Are you 12 to 18 years old and looking for something fun to do this summer?

Check out Youth at the Log Cabin in Central Park every day (except Sunday) during August. Each day features a different theme where you can drop in and relax, play games and connect with friends. For details and themes, visit [sprucegrove.org/LogCabinYouth](http://sprucegrove.org/LogCabinYouth).



## Career Opportunities

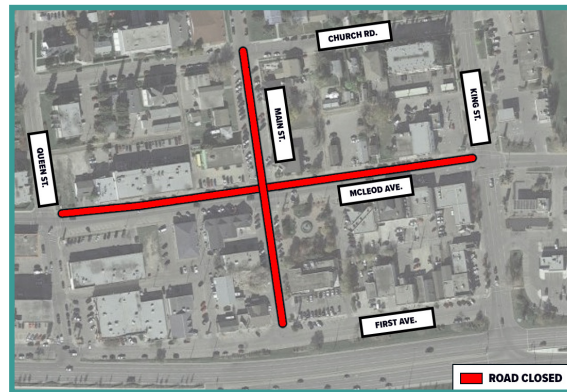
- General Manager of Corporate Services and Chief Financial Officer (CFO)
- Data Analyst
- Assistant Controller - Budget and Financial Planning
- Manager of Enforcement Services
- Assistant Deputy Chief
- Insurance and Risk Management Advisor
- Maintenance Worker
- Manager of Community Social Development

For details or to apply, visit [sprucegrove.org/Careers](http://sprucegrove.org/Careers).

## News You Can Use

### Main St from First Ave to Church Rd and McLeod Ave from Queen St to King St, including intersection, temporarily closed

Starting on or about August 18, the intersection at McLeod Avenue and Main Street will be fully closed for approximately two weeks. This includes the full closure of Main Street from First Avenue to Church Road and McLeod Avenue from Queen Street to King Street. This closure is necessary to complete the concrete pedestrian crossings and complete the final paving of asphalt on the roadways. Visit [sprucegrove.org/CCARP](http://sprucegrove.org/CCARP).



### Construction Signage

Construction signage is in place for your safety and ours! Please watch for and follow all signage and construction personnel. Stay in the know with construction by visiting [sprucegrove.org/ConstructionProjects](http://sprucegrove.org/ConstructionProjects). There is a list and map of everything going on in the City!



### Spray Park

Stay cool this summer at the Ken Morrison/REMAX Excellence Spray Park at Jubilee Park! Before you go, visit [sprucegrove.org/SprayPark](http://sprucegrove.org/SprayPark) for hours, rules, temporary closures and more.



## Council Meetings

### Regular Council meeting Monday, Aug. 21, 2023

Spruce Grove City Council's Regular Council meeting on Monday, Aug. 21 at 6 p.m. will be open to the public and live streamed at [sprucegrove.org/LiveCouncil](http://sprucegrove.org/LiveCouncil).

Members of the public may participate in the Public Input Session either in person or virtually. Virtual participation may be done by registering by email [cityclerk@sprucegrove.org](mailto:cityclerk@sprucegrove.org) or by calling 780-962-7615 before noon on Monday, Aug. 21.

Alternately, residents can submit a statement or a question to be read on their behalf by emailing [cityclerk@sprucegrove.org](mailto:cityclerk@sprucegrove.org) until the Public Input Session is complete.

City Council and Governance and Priorities Committee Meeting agendas and meeting minutes are available at [sprucegrove.org/Agenda](http://sprucegrove.org/Agenda).



## Notice of development permit decisions

The following development permits for discretionary uses and variances have been approved under the provisions of the Land Use Bylaw. This list does not include Permitted Uses. For a full list of all Development Permit decisions, as well as how to appeal a decision of the Development Officer to the Subdivision and Development Appeal Board, please visit [sprucegrove.org/DevPermitNotices](http://sprucegrove.org/DevPermitNotices). Please direct any questions to the Planning and Development Department at 780-962-7582, Monday to Friday from 8:30 a.m. to 4:30 p.m.

Permit #	Legal Land Description	Project Address
Use: Permitted with Variance		
PLDPR202300636	2321101;7;10	9 KINGSTON LOOP
	To construct a single detached dwelling with attached garage for use as a show home	